




**VIAPLANT**

designed by nature

**MATERIALS**  
2024



VIAPLANT

BUDAPEST - HUNGARY

VIAPLANT MANUFACTURES  
PLANT-BASED, CREATIVE  
MATERIALS FOR THE  
ARCHITECTURE AND  
DESIGN INDUSTRY.

# NATURE STORY MATERIAL

## ABOUT VIAPLANT

The Viaplant brand was founded by Lépték-Terv, a landscape architecture studio in Hungary. It started as a form of artistic expression of the landscaping experience, working with plants for over two decades. As a result of in-house research and development, Viaplant manufactures creative, plant-based materials with various solutions combining nature and science.

## Biofilic Design

The materials are produced for the architecture and design industry, with unique aesthetics values determined by real plant components. Once they are illuminated, they offer a completely new experience that can resonate with any home, hotel or office, whether residential or commercial indoor space. The coverings and objects can bring the atmosphere of nature into our interiors creating a relationship between landscape and people in the built environment.

## /// Storytelling concept

The Viaplant brand is fundamentally defined by its philosophy, the storytelling concept. The duality of form and function is complemented by a story that stems from the place of origin of the plants and the associated memories.

Plants from various locations tell us many things. They connect generations through the historical past and also effectively reflect on the present. They draw attention to the value of the green spaces around us, the importance of the relationship between man and nature, the importance of human relationships and our precious moments.

## ***VIAPLANT MATERIALS***

2024

CAST	14 - 31
WALLPAPER	32 - 45
TEXTILE	46 - 57
GLASS	60 - 73
BOARD	74 - 83

## **PLANTS AND TEXTURES / 84 - 113**

CALAM-TRITICUM | bushgrass-straw

CALAM-POA | bushgrass-grass

PHRAGMIT | reed

LUNARIA | annua honesty

TRITICUM | straw

SOLIDAGO | goldenrods

ELEAGNA | silver berry

FOLI CUVEEI | autumn leaves

PEONIA | peony

ROSA | rose

LIGNUM BLUE | tinted woodwool

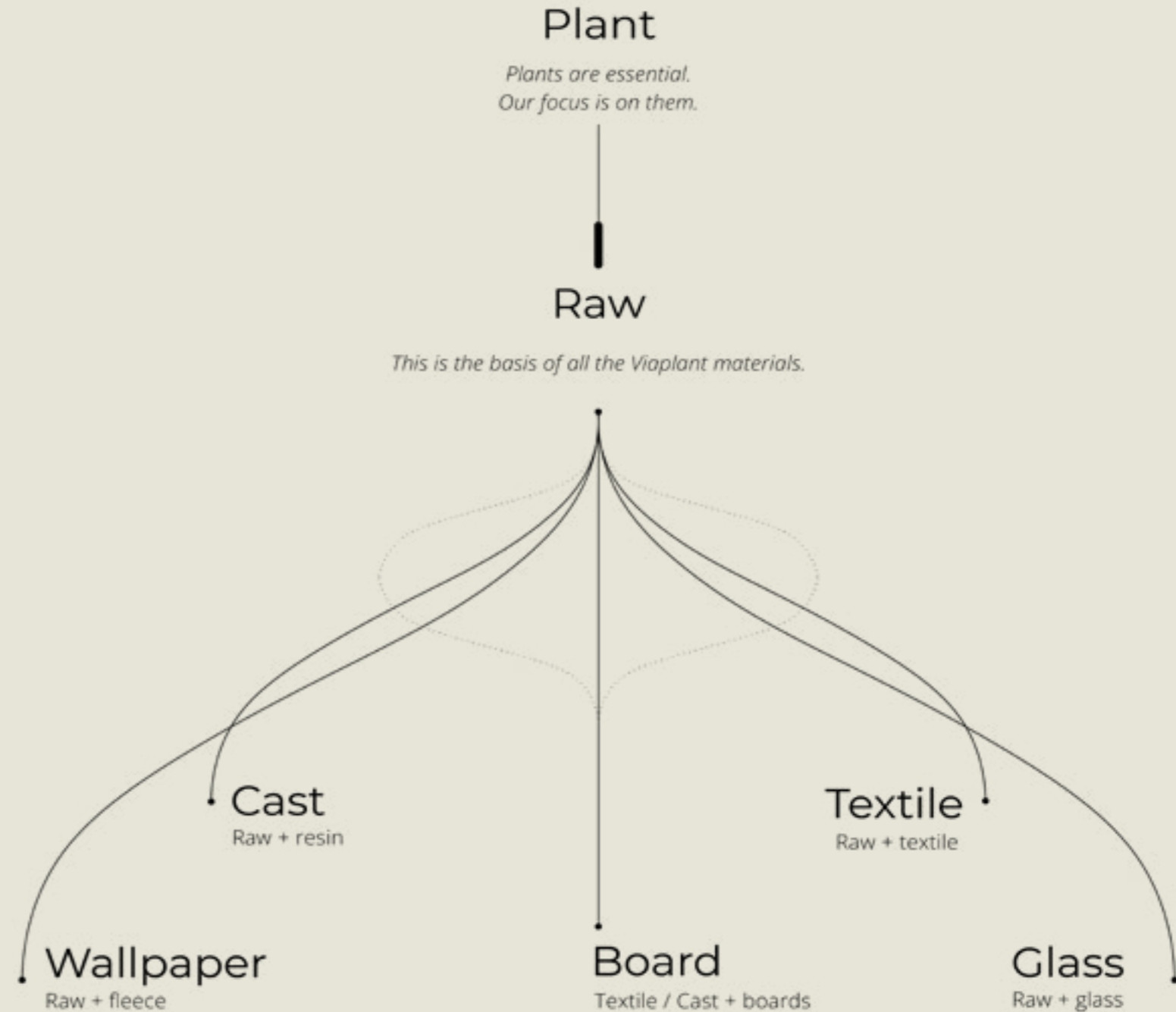
GRAMINA | hay

POA FLORI | grass with flowers

FLORES MIX | mixed petals

# MATERIALS

Our innovative design solutions bring the beauty and diversity of nature closer while creating unique value in living spaces.



RAW



RAW is a lightweight sheet made of plant mesh. The plants are paired with an environmentally friendly, water-based adhesive providing tactile and visually engaging surfaces. This is the basis of all the Viaplant materials.





# **Cast**

RAW + RESIN

Viaplant® CAST is a composite material where plants are paired with a resistant, water-clear binder, providing lightweight, durable, and easy-to-clean surfaces. Inspired by nature, we drew our concept from the timeless preservation seen in amber, where insects are perfectly conserved for millions of years. We harnessed this „technology“ to create our plant surfaces, preserving the natural beauty and unique structure of plants while crafting a durable and aesthetically pleasing material.



## CHARACTERISTICS

durable surface  
matte or glossy  
3d depth  
unique design

## APPLICATION

illuminatted walls  
wall coverings: wall tiles  
partition wall  
kitchen splashback  
decoration, custom products

## PRODUCTS

custom made products  
lamp shades  
furniture finishing

## THICKNESS and WEIGHT: :

3 mm  $\pm$  0.2-3 mm (~ 2.8-6 mm)  
~ 3,8 kg/m<sup>2</sup>

## SIZES

2100x1100 mm  
2400x1200 mm





ILLUMINATED WALLS



WALL TILES



Electrolux

KITCHEN SPLASHBACK

1055



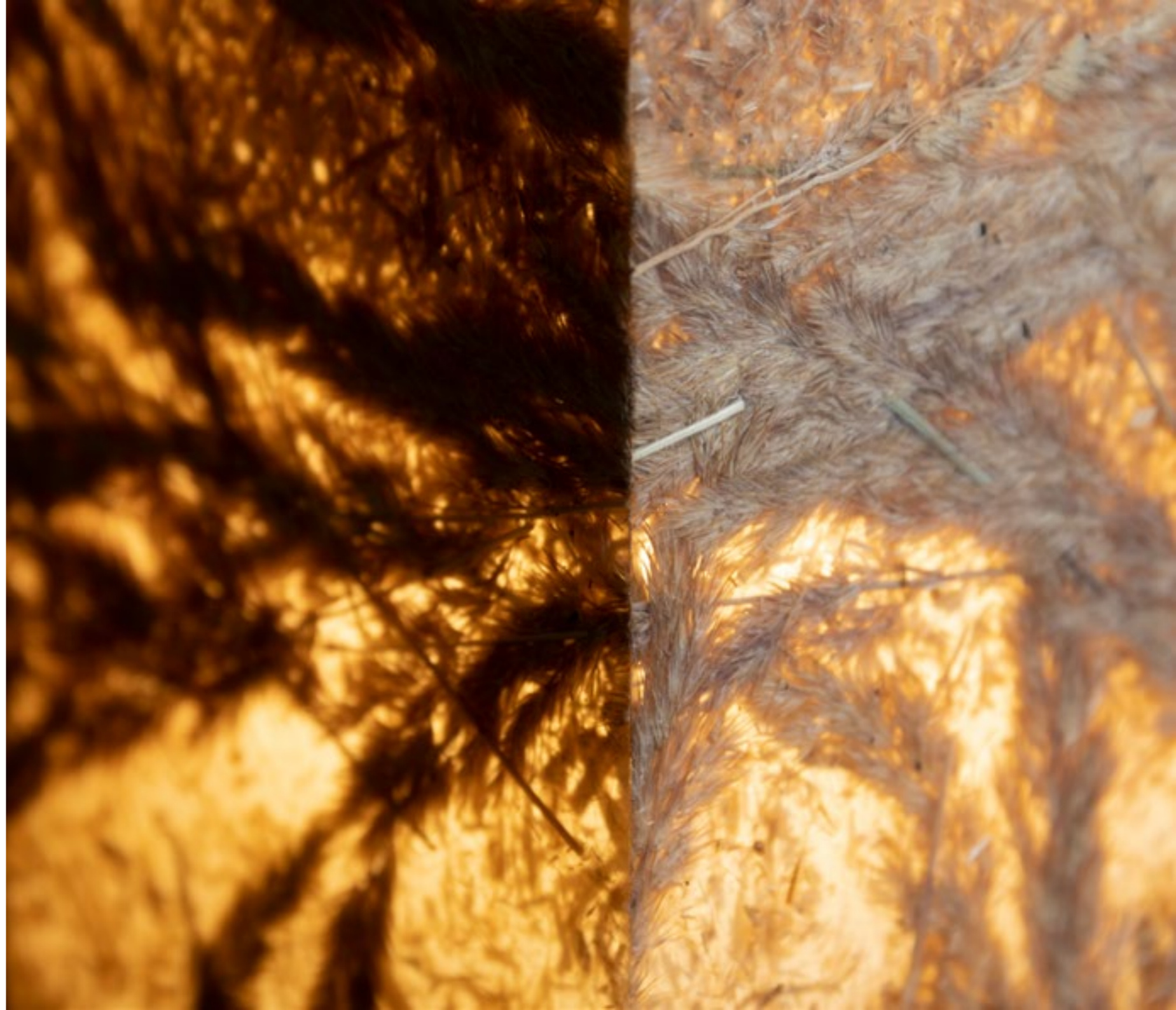
ILLUMINATED KITCHEN SPLASHBACK





LIGHTINGS









# *Wallpaper*

RAW + PAPER

Viaplant® WALLPAPER is a lightweight and environmentally friendly green composite where plants are paired with nonwoven fabric.

## CHARACTERISTICS

extremely light  
bendable  
translucent  
natural material

## APPLICATION

Wall coverings: can be applied as wallpaper even at curved surfaces.

Screens of room dividers, partition walls, decoration.

Both one- and two-sided applications are possible depending on the area of use. Additional (matt or glossy) varnish coatings can be applied to further strengthen the material / increase its durability

## THICKNESS and WEIGHT:

1-2 mm; depending on whether it has a single or double-sided plant cover  
Weight ~ 600-800 g/m<sup>2</sup> depending on the amount of plants material used

## SIZES

maximum size: 2400x1200 mm















# *Textile*

RAW + TEXTILE

Viaplant® TEXTILE is a lightweight and environmentally friendly green composite where plants are paired with textile sheets. The type and color of the textile as well as the amount of plant parts can be customized upon request.



## CHARACTERISTICS

- extremely light
- bendable
- translucent
- natural material

## APPLICATION

Thanks to its flexibility and translucency, this material is ideal for use as lampshades. It can also be applied as wallpaper, even on curved surfaces. Additionally, it is suitable for screens in room dividers, partition walls, and decorative elements. Extra elastic layers can be added to enhance the material's strength and durability.

## THICKNESS and WEIGHT: :

1-2 mm; depending on whether it has a single or double-sided plant cover  
Weight ~ 500-800 g/m<sup>2</sup> depending on the amount of plants material used

## SIZES

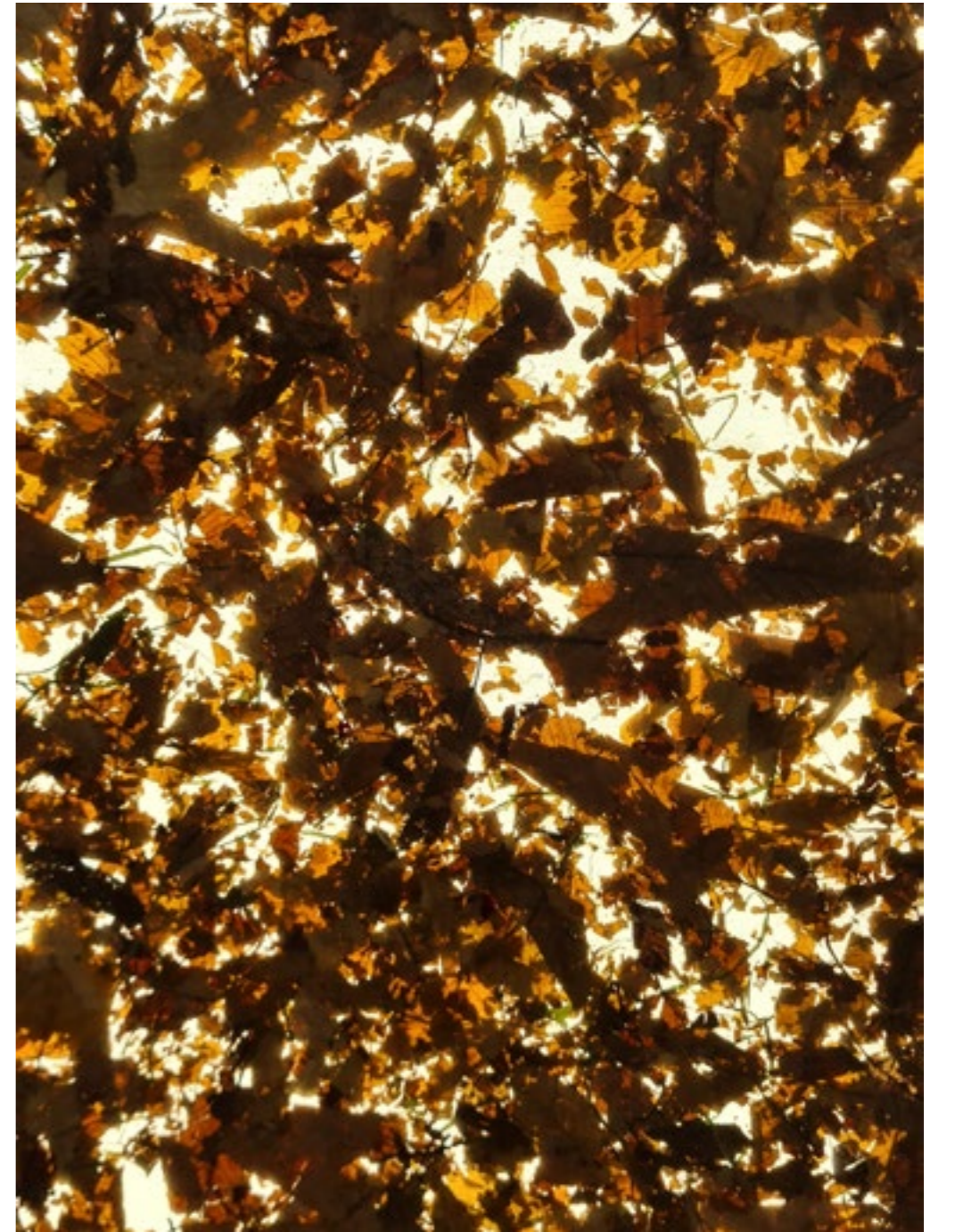
maximum size: 2400x1200 mm













# ***Glass***

RAW + GLASS

Viaplant® GLASS is an amber-like, glossy, tempered glass material encapsulating organic plant components. It is resistant to chemical reactions and to physical stress.

## CHARACTERISTICS

glass surface with glossy finish  
vivid colours  
glass adds certain depth effect  
to the material

## APPLICATION

Wall coverings  
railings  
shower cabins and screens  
design radiator front panel  
furniture  
windows and door glass surface

## SIZES

Custom size according to the customer's  
pre-defined requirements, as tempered  
glass cannot be customized i.e. drilled,  
cut, shaped afterwards.

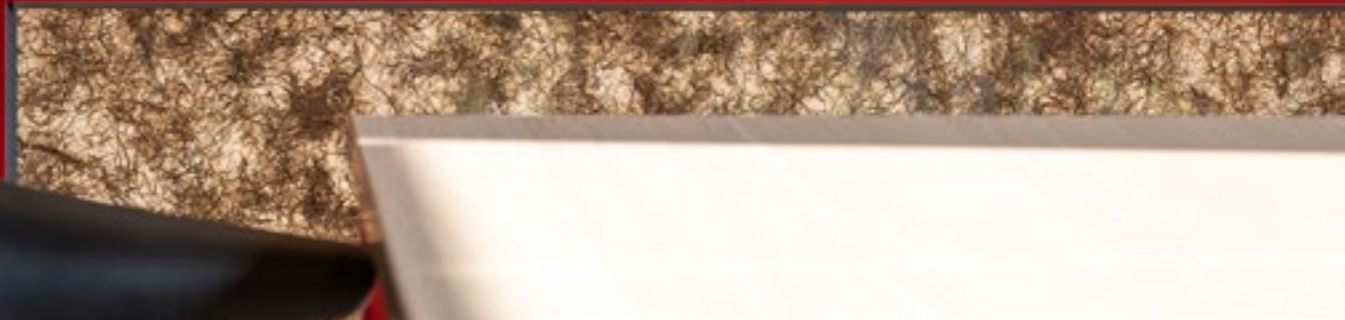
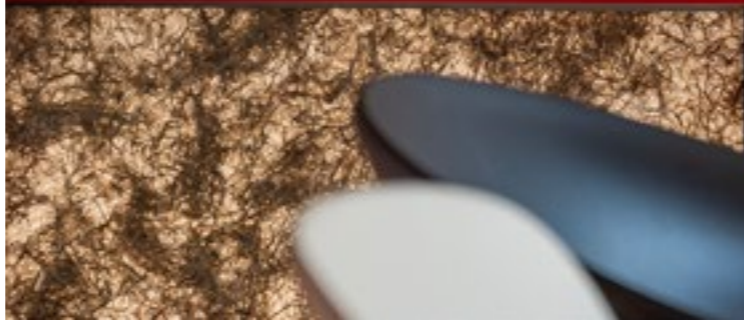
Maximum production size:

- Tempered glass: 1600x3000 mm
- Thermally insulating glass: 1600x3000 mm
- Bonded glass: 1600x3000 mm







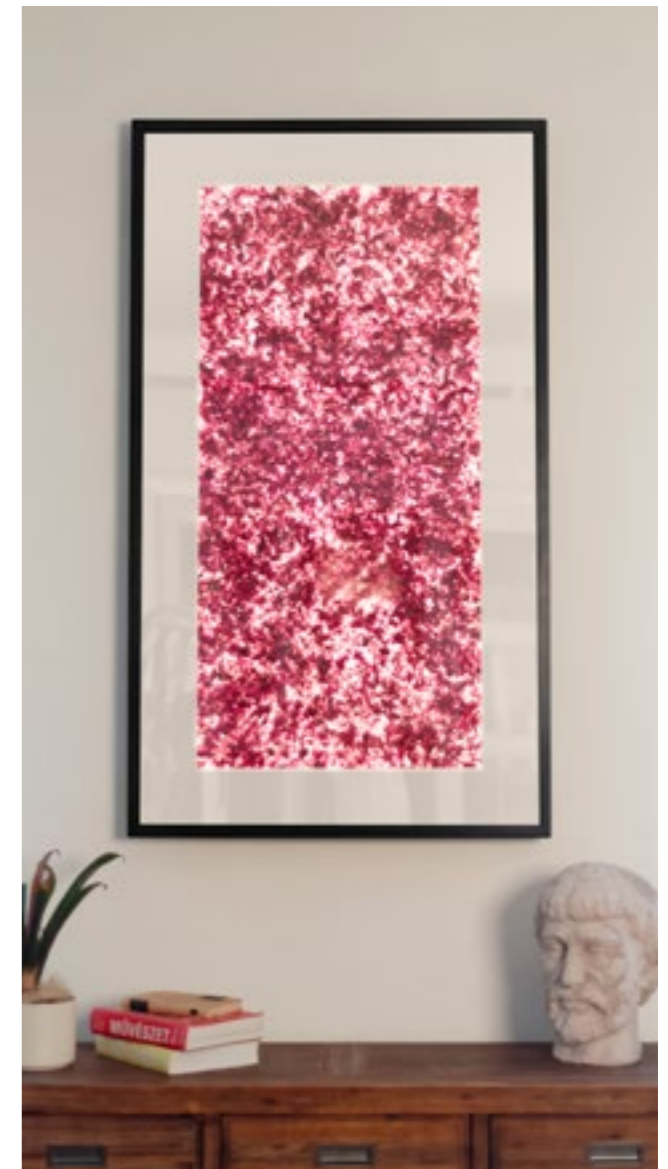




ILLUMINATED WALLS







QUADRUM ART wall lamps



# ***Board***

*TEXTILE / CAST + BOARD*

Viaplant® BOARD was developed for the furniture industry and can be used in most areas where veneered materials are used. Most wood-based panels (e.g. chipboard, OSB, plywood, MDF, HDF) can act as the basis for Viaplant materials therefore we are offering pre-laminated sheets using Viaplant® TEXTILE or Viaplant® CAST.

## APPLICATION

- cabinet doors
- drawer fronts
- table tops
- room dividers
- decorative surfaces

Additional (varnish, foils) surface treatments can be applied to further increase durability and shine.

General edging techniques can be used to seal sawn edges. Solid wood edging or edge banding is recommended.

Can be customized for existing/custom wooden elements, e.g. for furniture, including wear surfaces (not floors)

## SIZES

maximum size: 2400x1200 mm













# PLANTS AND TEXTURES

The obvious character of Viaplant is the plant itself – its details, colour and texture record one moment in time of the plant's development, whether it is a leaf, flower petal or plant stem.

Similarly, to amber that captures the history of life, Viaplant material encapsulates nature's artistic performance and preserves it in the long run. The colours from seasonal variations, the real plant textures and the originating location, all add an emotional dimension to the Viaplant material.

“The quiet beauty of the feather grass meadow, shrouded in mist, radiates a delicate harmony. Amidst the golden stems of the dry inflorescences, the distant forest edge emerges mysteriously, providing a picturesque backdrop to the scene. The composition is both abstract and natural, reminiscent of the ‘pliage’ motifs in Simon Hantai’s paintings. The captivating pattern is perfectly expressed even on the small surface of a lamp, capturing the serene atmosphere of the summer meadow.”



CALAM-TRITICUM | bushgrass-straw





CALAM-POA | bushgrass-grass





PHRAGMIT | reed





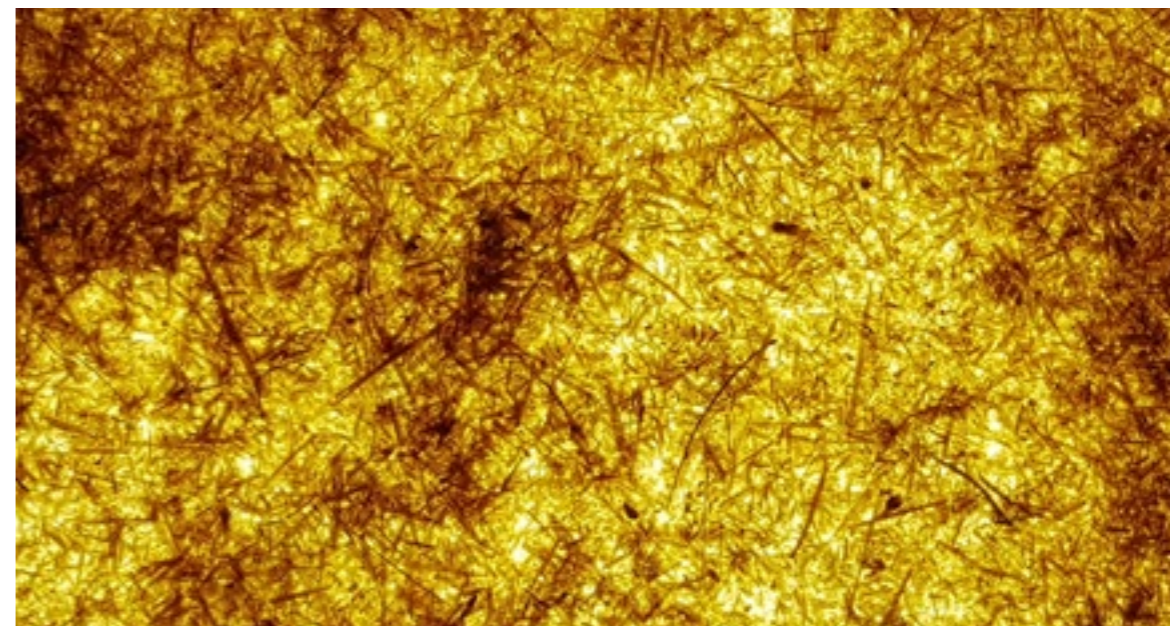
“The delicate beauty of the honesty plant’s translucent seed pods exudes a fragile elegance. The dry, silvery husks hang gracefully from the slender stem, resembling tiny works of art. This natural composition evokes both abstract artistic creations and fine craftsmanship.

LUNARIA | annua honesty





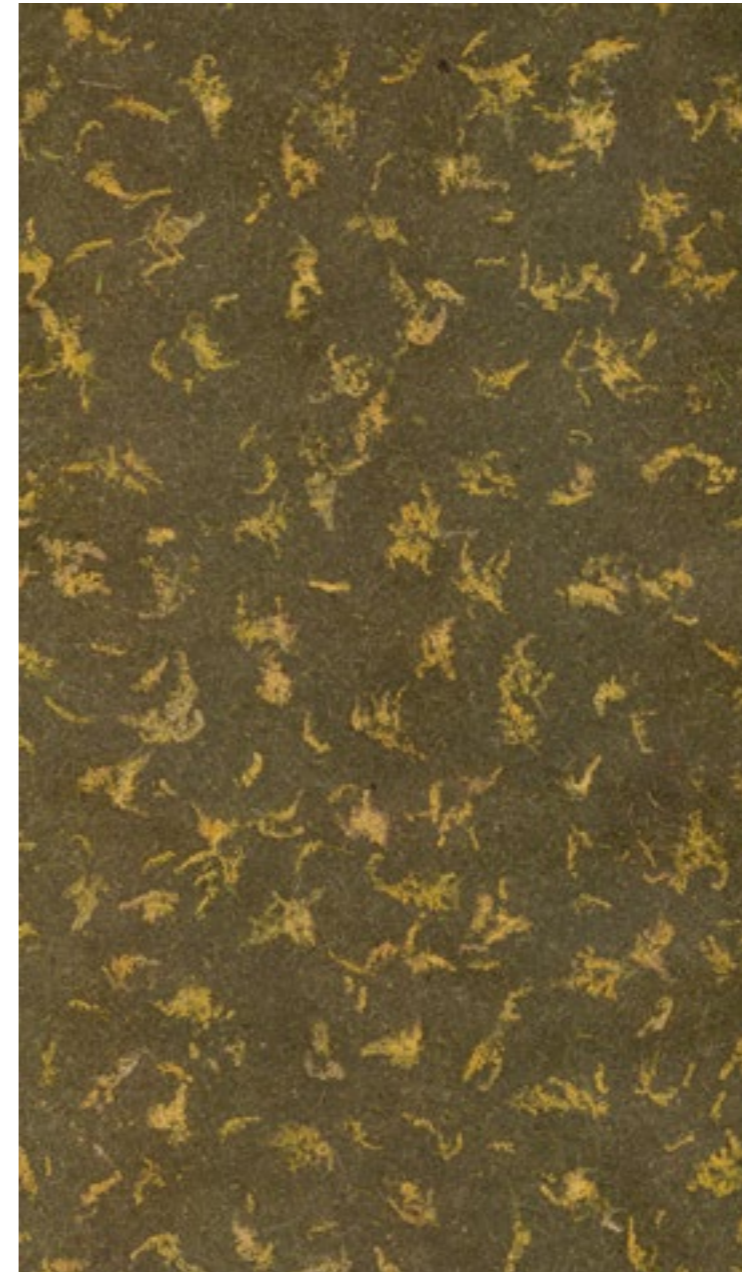
TRITICUM | straw







SOLIDAGO | goldenrods



Sustainability is key; we use plants as raw materials with a renewable cycle of one year or less. Plants are sourced locally from parks, outdoor areas, following urban area maintenance.

We also consider up-cycling by creating material from ragweed, reed, Canadian goldenrod, thus creating value out of an otherwise invasive and largely spread plant.

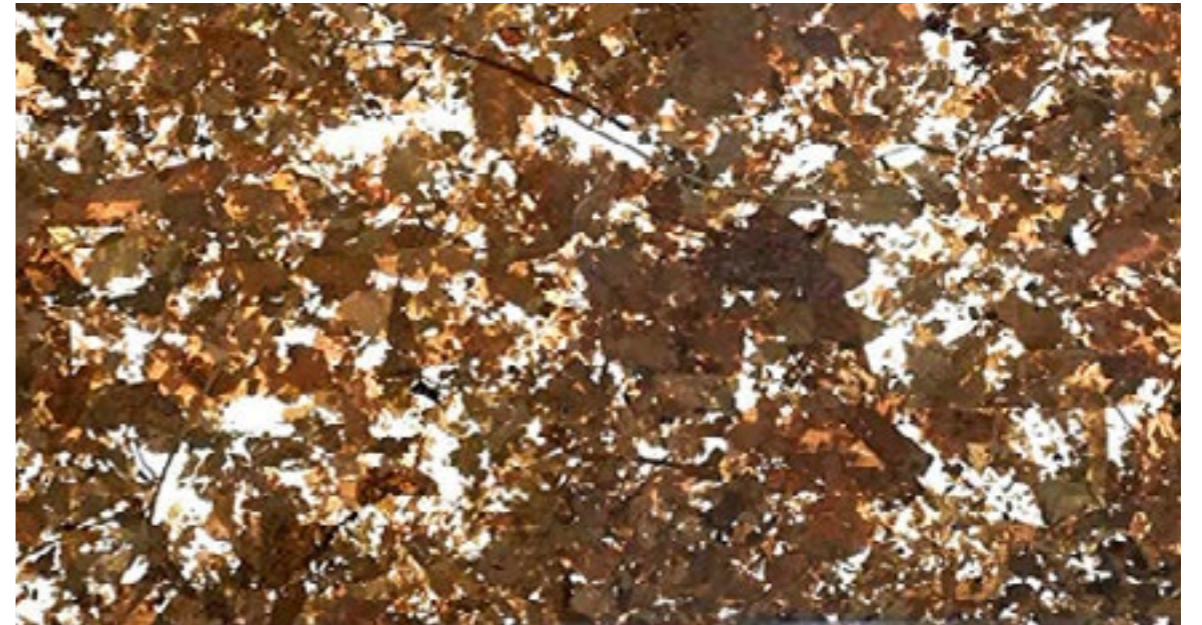


ELEAGNA | silver berry



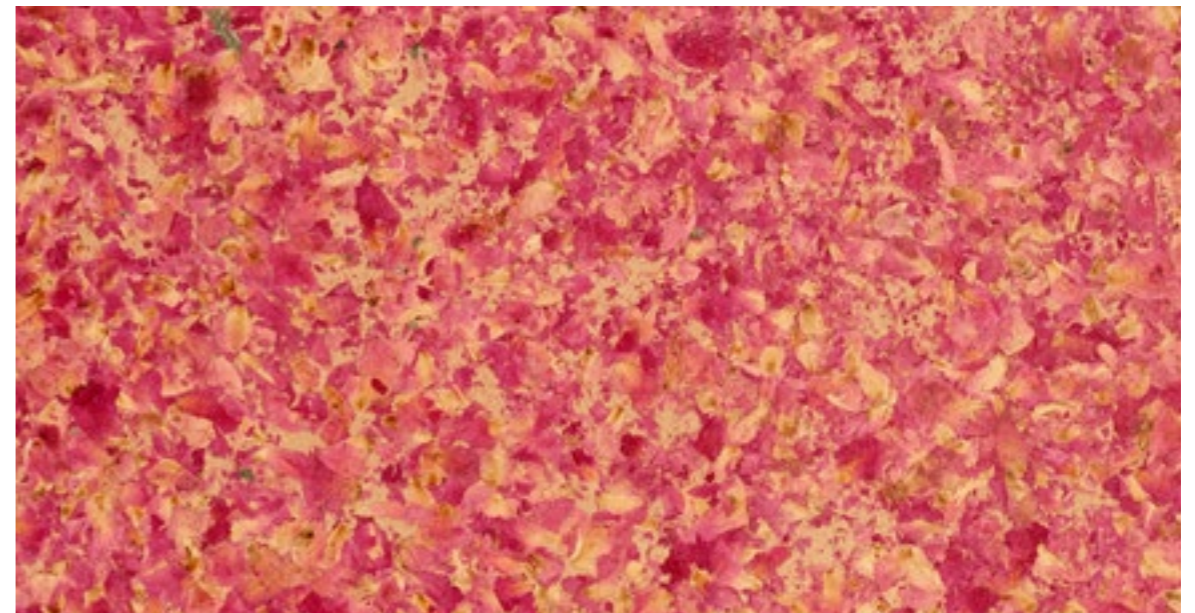
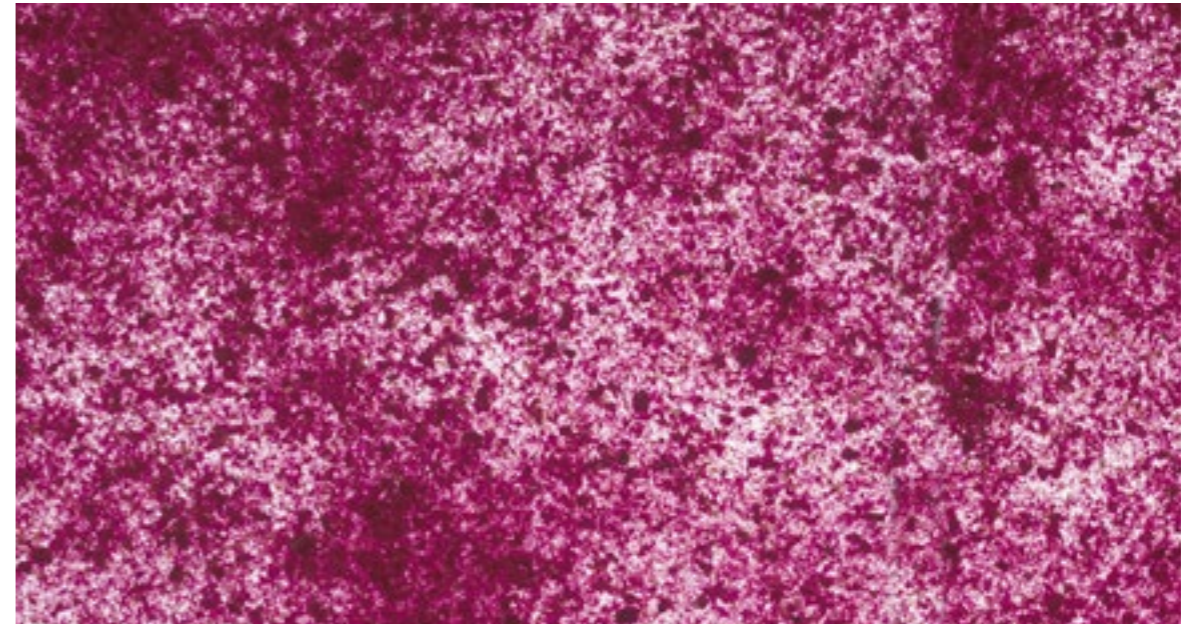


FOLI CUVÉE | autumn leaves





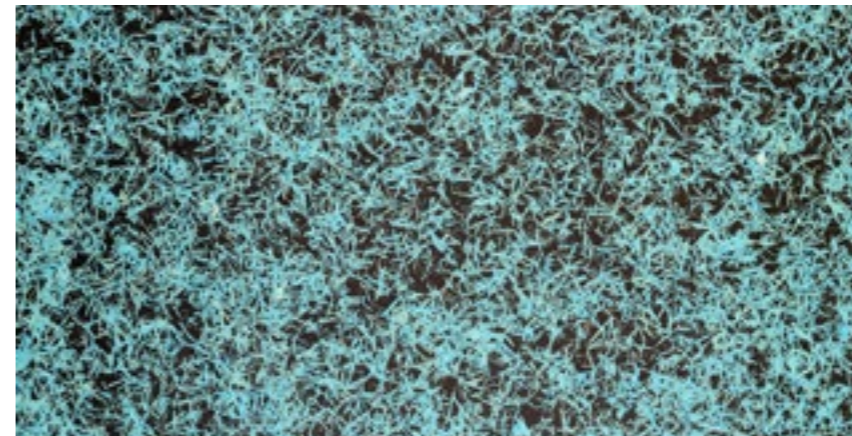
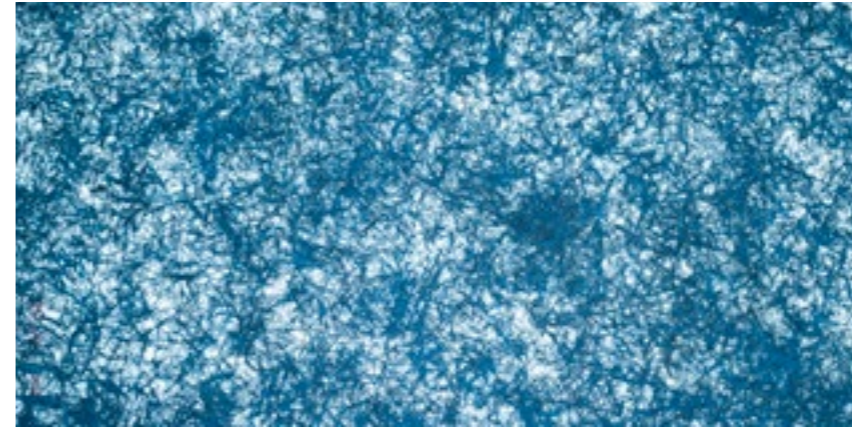
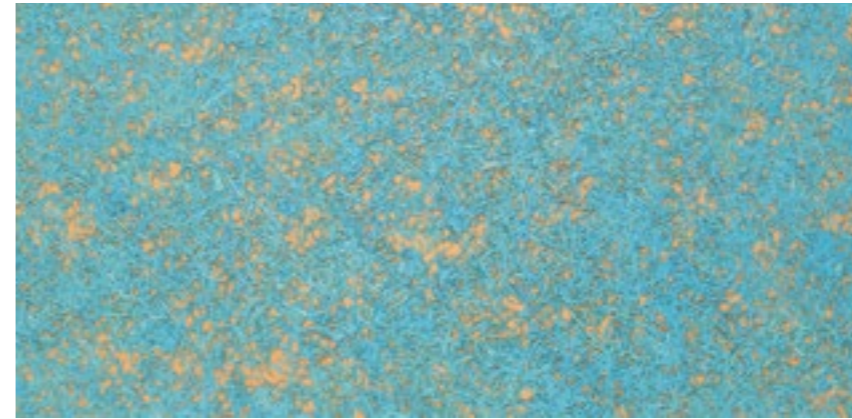
PEONIA | peony





ROSA | rose





Lignum color combines woodwool with human imagination. The texture of the tinted woodwool creates a modern effect, and when illuminated, it gives an impressive atmosphere.

LIGNUM BLUE | tinted woodwool

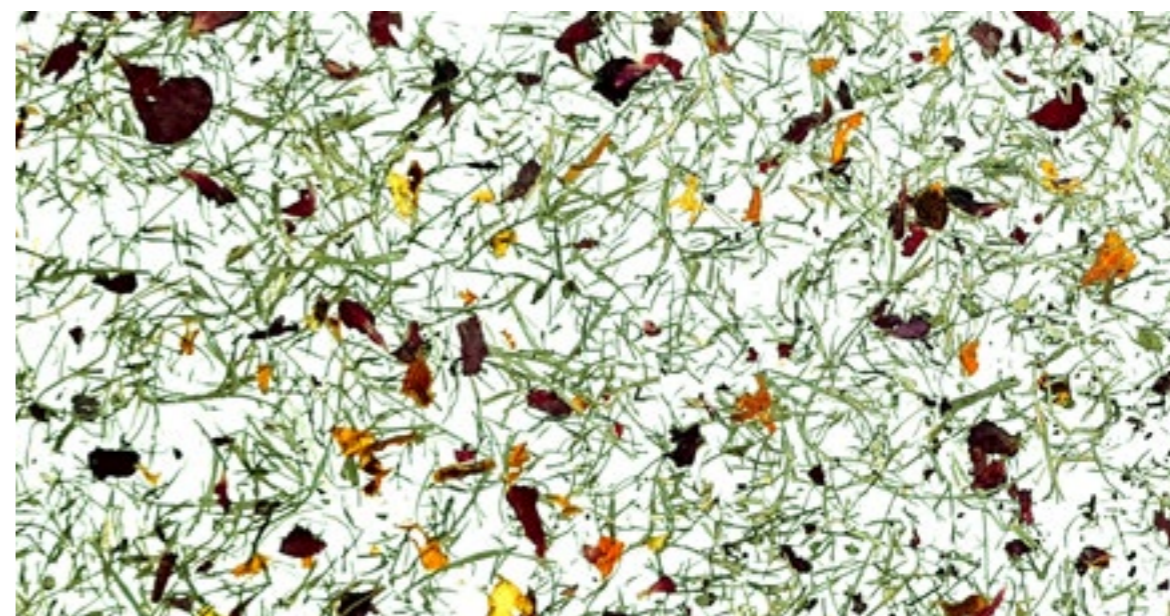


GRAMINA | hay





POA FLORI | grass with flowers







FLORES MIX | mixed petals



FLORES MIX | mixed petals

## BESPOKE TEXTURES

*Storytelling concept*

A good object is defined by your understanding of what it means to you.

The Viaplant brand is fundamentally defined by its philosophy, the so-called story concept. The duality of form and function is complemented by a story that stems from the place of origin of the plants and the associated memories.



VIAPLANT IMAGINES A FUTURE WHERE PEOPLE LIVE IN MORE NATURAL SPACES AND RELATE TO NATURAL RESOURCES IN A MORE CONSCIOUS MANNER

## Reconnecting with nature

Today, we have to look at an urban green space - like any other utilities - as a service provider. We must interpret it as a system that provides people an ecological service. Urban green areas are the basis of healthy urban life. They are habitats, community spaces, means of fresh air and serves as climate protection.

As landscape architects and material developers, our mission is to make people have a more conscious, living relationship with natural resources in our modern built environment. Our workshops, presentations and tenders aim to improve the problem of so-called 'plant blindness', which is a pervasive insensitivity to the green environment and a general neglect of the plants. Furthermore, following our philosophy, we like to draw attention not only to the urban importance of plants, but also to their cultural significance.

## Sustainability

Examining our relationship with the Earth, we see that we depend directly and indirectly on the raw materials mined, grown or manufactured in it. For this reason, we must pay close attention to the environmental impact of our materials and the sustainability of production technologies.

We are constantly working on finding solutions that are as environmentally conscious as possible. We try to develop organic materials that have a positive effect on the world by large, being less polluting and using the sustainable processes of nature with their recyclable or even compostable properties.

We are present in material libraries to display and share authentic information regarding our research and material innovations, thus we are able to create cooperation in between the design industry and other sectors, as well as designers and manufacturers.



## **V I A P L A N T**

+36 (20) 257 7040  
viaplant@viaplant.com  
[www.viaplant.com](http://www.viaplant.com)

SHOWROOM  
H-1136 Budapest,  
Hegedűs Gyula utca 15.



[VIAPLANT.COM](https://viaplant.com)