

VIAPLANT

SELECTION

NATURE STORY MATERIAL

ABOUT VIAPLANT

The Viaplant brand was founded by Lépték-Terv, a landscape architecture studio in Hungary. It started as a form of artistic expression of the landscaping experience, working with plants for over two decades. As a result of in-house research and development, Viaplant manufactures creative, plant-based materials with various solutions combining nature and science.

Biofilic Design

The materials are produced for the architecture and design industry, with unique aesthetics values determined by real plant components. Once they are illuminated, they offer a completely new experience that can resonate with any home, hotel or office, whether residential or commercial indoor space. The coverings and objects can bring the atmosphere of nature into our interiors creating a relationship between landscape and people in the built environment.

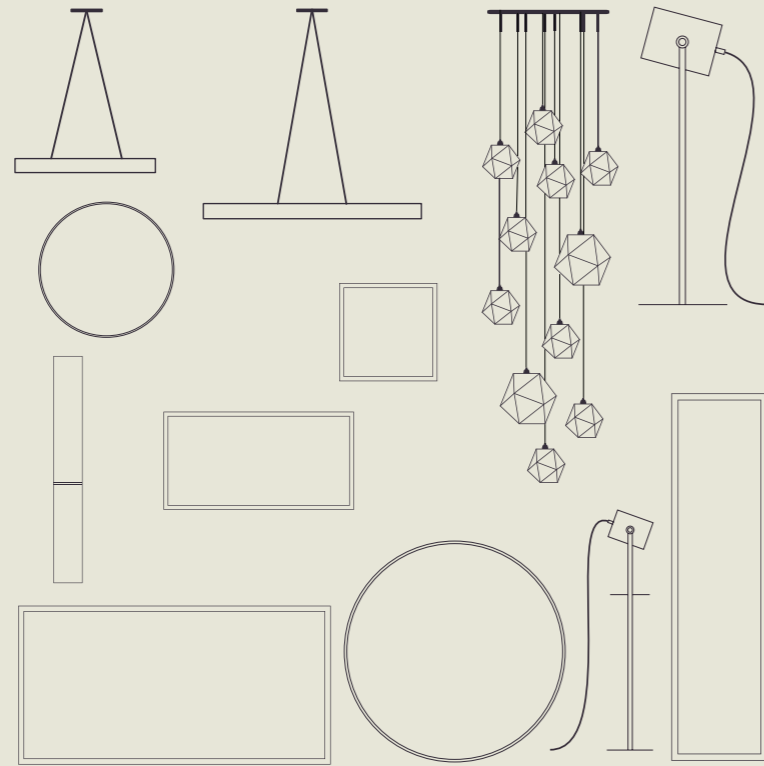
/// Storytelling concept

The Viaplant brand is fundamentally defined by its philosophy, the storytelling concept. The duality of form and function is complemented by a story that stems from the place of origin of the plants and the associated memories.

Plants from various locations tell us many things. They connect generations through the historical past and also effectively reflect on the present. They draw attention to the value of the green spaces around us, the importance of the relationship between man and nature, the importance of human relationships and our precious moments.

A close-up photograph of a person's hand holding a single, dried, brown grass stem. The hand is positioned on the left side of the frame, with the thumb and index finger gripping the stem. The background is a textured surface, likely a rug or carpet, made of various shades of green and brown grasses, some of which are also dried and brown. The lighting is soft and natural, highlighting the texture of the grass and the skin of the hand.

OUR INNOVATIVE DESIGN SOLUTIONS
BRING THE BEAUTY AND DIVERSITY OF
NATURE CLOSER CREATING UNIQUE
VALUES IN LIVING SPACES.



SELECTED COLLECTION

2024

RUNDO / 5-10

QUADRUM / 6-16

LIBRO / 17-20

COLUMNNA / 21-23

CHANDELIER / 24-26

PLANTS AND TEXTURES / 27-38

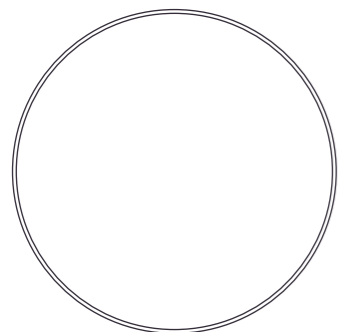


RUNDO

RUNDO 60

WALL LAMPS

60



CODE

6001

WEIGHT

NET 2 kg / 2,5 kg

GROSS 2.5 kg / 3,0 kg

LIGHT SOURCE

LED modules, dimmable,
color temperature can be changed

DIMENSIONS

HEIGHT: 60 cm

WIDTH: 8 cm

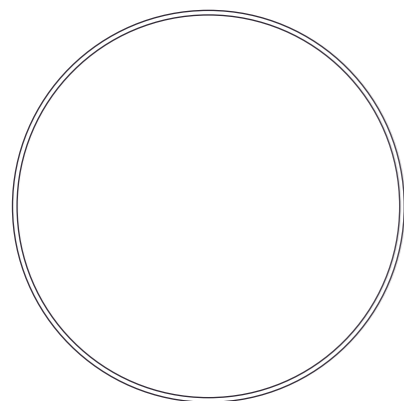
DEPTH: 6 cm



RUNDO 100

WALL LAMPS

100



CODE
6003

WEIGHT
NET 3 kg / 3,5 kg
GROSS 3.5 kg / 4,0 kg

LIGHT SOURCE
LED modules, dimmable,
color temperature can be changed

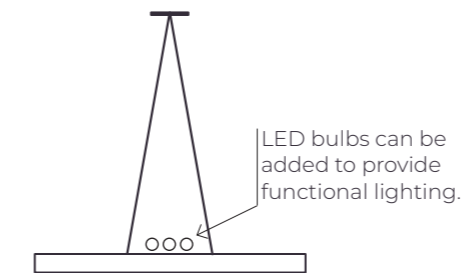
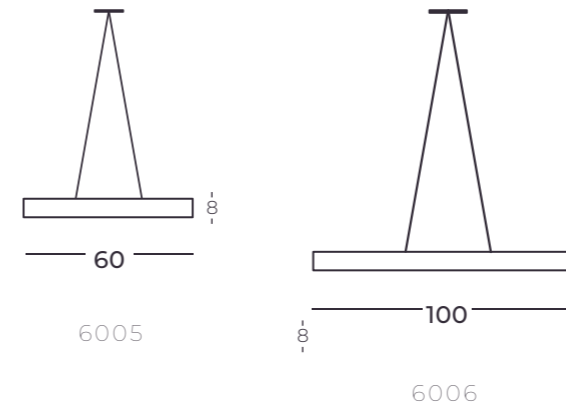
DIMENSIONS
HEIGHT: 60 cm
WIDTH: 8 cm
DEPTH: 6 cm





RUNDO 60/100

PENDANT LAMPS



CODE

6005, 6006

LIGHT SOURCE

LED modules, dimmable,
color temperature can be changed

DIMENSIONS

CABLE LENGTH:
Personalization options available.

TYPE: 6005
HEIGHT: 60 cm
WIDTH: 8 cm
DEPTH: 6 cm

TYPE: 6006
HEIGHT: 100 cm
WIDTH: 8 cm
DEPTH: 6 cm

/// NATURE INTO
INTERIORS





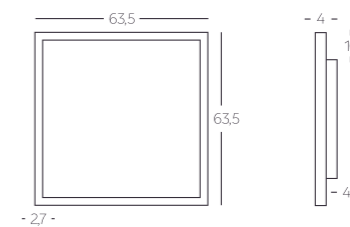
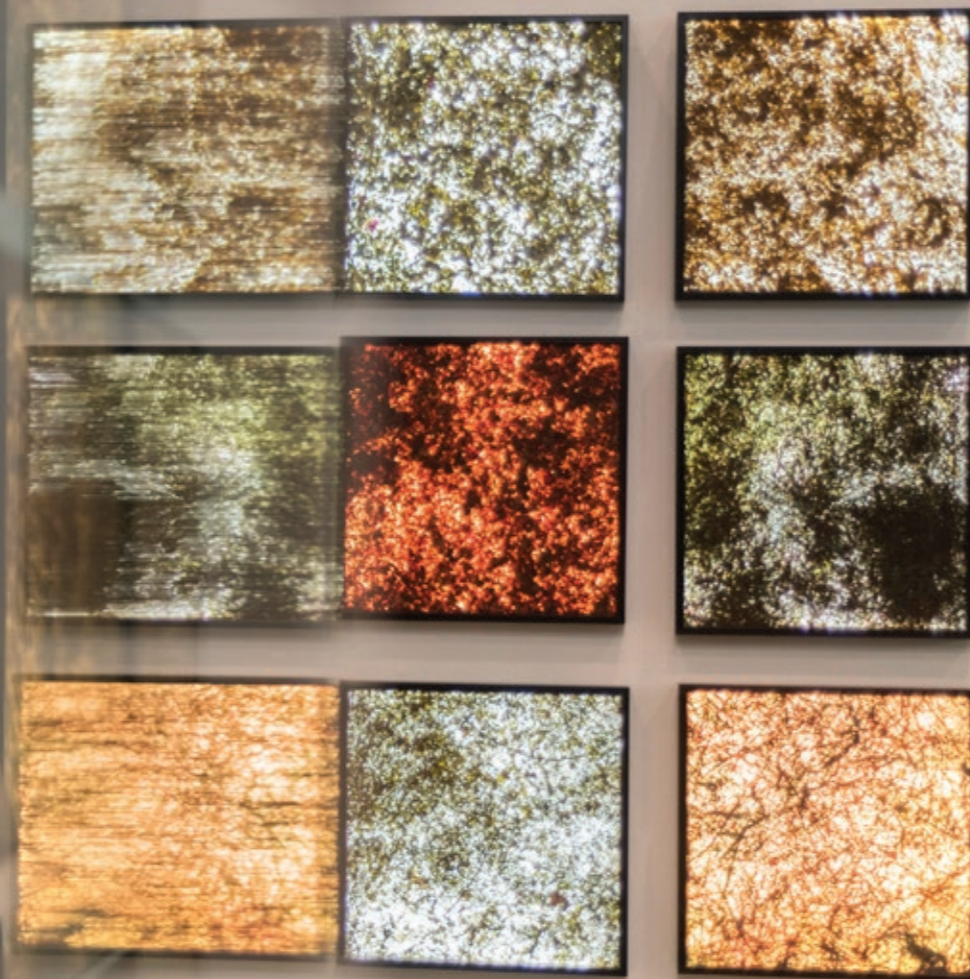
/// CALMING
ATMOSPHERE



QUADRUM

QUADRUM ,S'

WALL LAMPS



CODE

3401

WEIGHT

NET 10 kg

GROSS 13 kg

LIGHT SOURCE

LED panel

DIMENSIONS

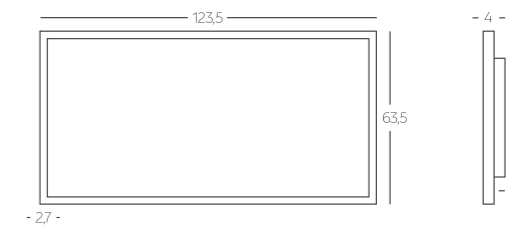
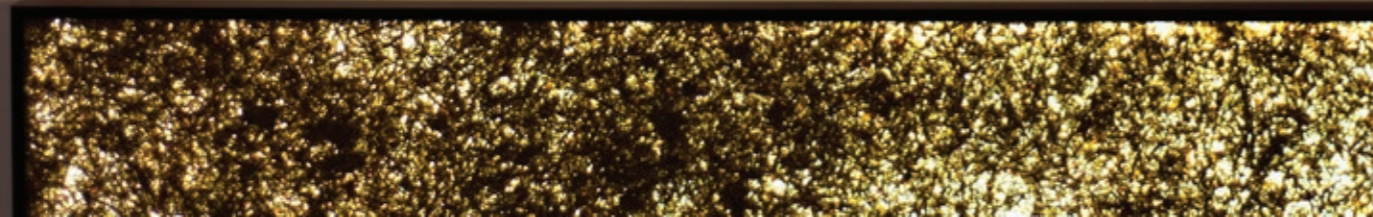
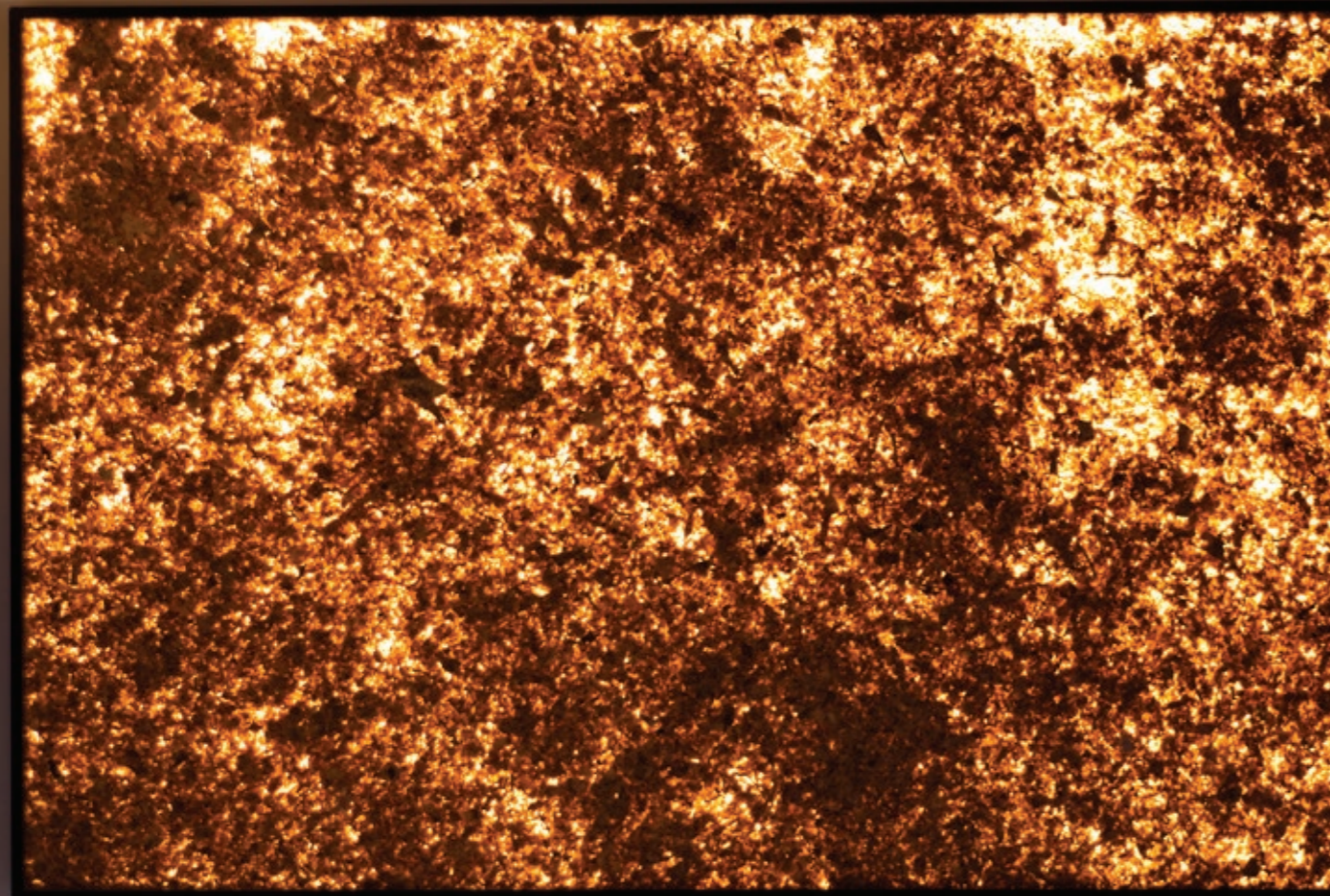
HEIGHT: 63,5 cm

WIDTH: 63,5 cm

DEPTH: 8 cm

QUADRUM ,M'

WALL LAMPS



CODE

3402

WEIGHT

NET 18 kg

GROSS 24 kg

LIGHT SOURCE

LED panel

DIMENSIONS

HEIGHT: 123,5 cm

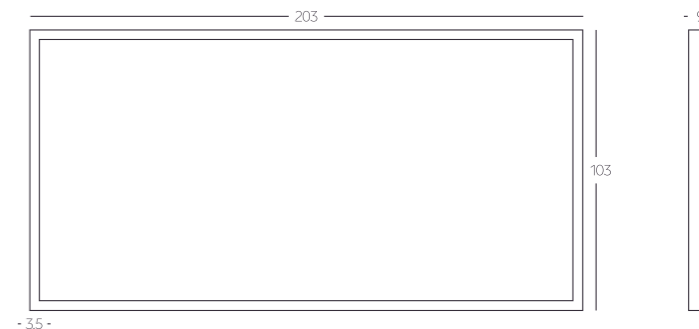
WIDTH: 63,5 cm

DEPTH: 8 cm



QUADRUM ,L'

WALL LAMPS



CODE

3403

WEIGHT

NET 35 kg

GROSS 43 kg

LIGHT SOURCE

LED panel

DIMENSIONS

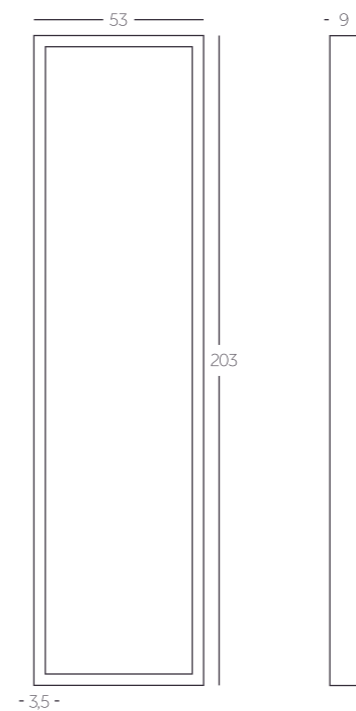
HEIGHT: 203 cm

WIDTH: 103 cm

DEPTH: 9 cm

QUADRUM LEAN

FLOOR LAMPS



CODE

3201

WEIGHT

NET 22 kg

GROSS 29 kg

LIGHT SOURCE

LED panel

DIMENSIONS

HEIGHT: 203 cm

WIDTH: 53 cm

DEPTH: 9 cm



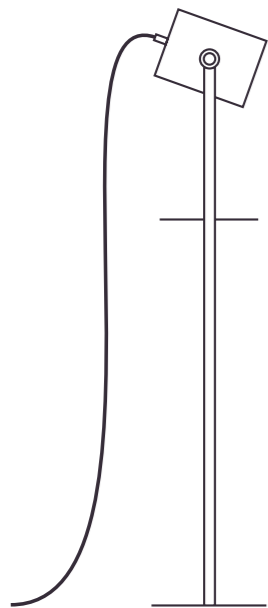
/// SENSORY
ENGAGEMENT



LIBRO

LIBRO ,M'

FLOOR LAMPS



CODE

5102

WEIGHT

NET 10,4 kg

GROSS 11 kg

LIGHT SOURCE

E27 LED light

DIMENSIONS

LEG HEIGHT: 150 cm

SHADE

HEIGHT: 20 cm

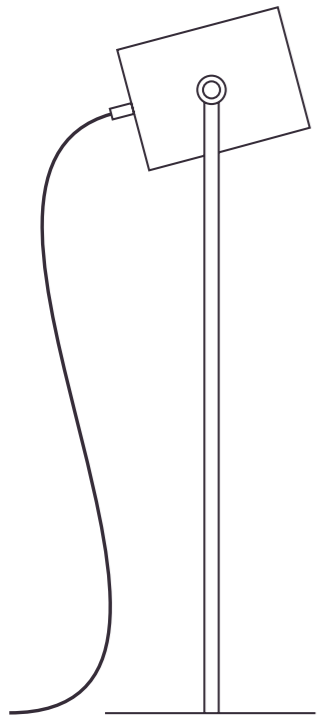
WIDTH: 20 cm

DEPTH: 20 cm



LIBRO ,L'

FLOOR LAMPS



CODE

5101

WEIGHT

NET 6,4 kg

GROSS 7 kg

LIGHT SOURCE

E27 LED light

DIMENSIONS

LEG HEIGHT: 150 CM

SHADE

HEIGHT: 40 cm

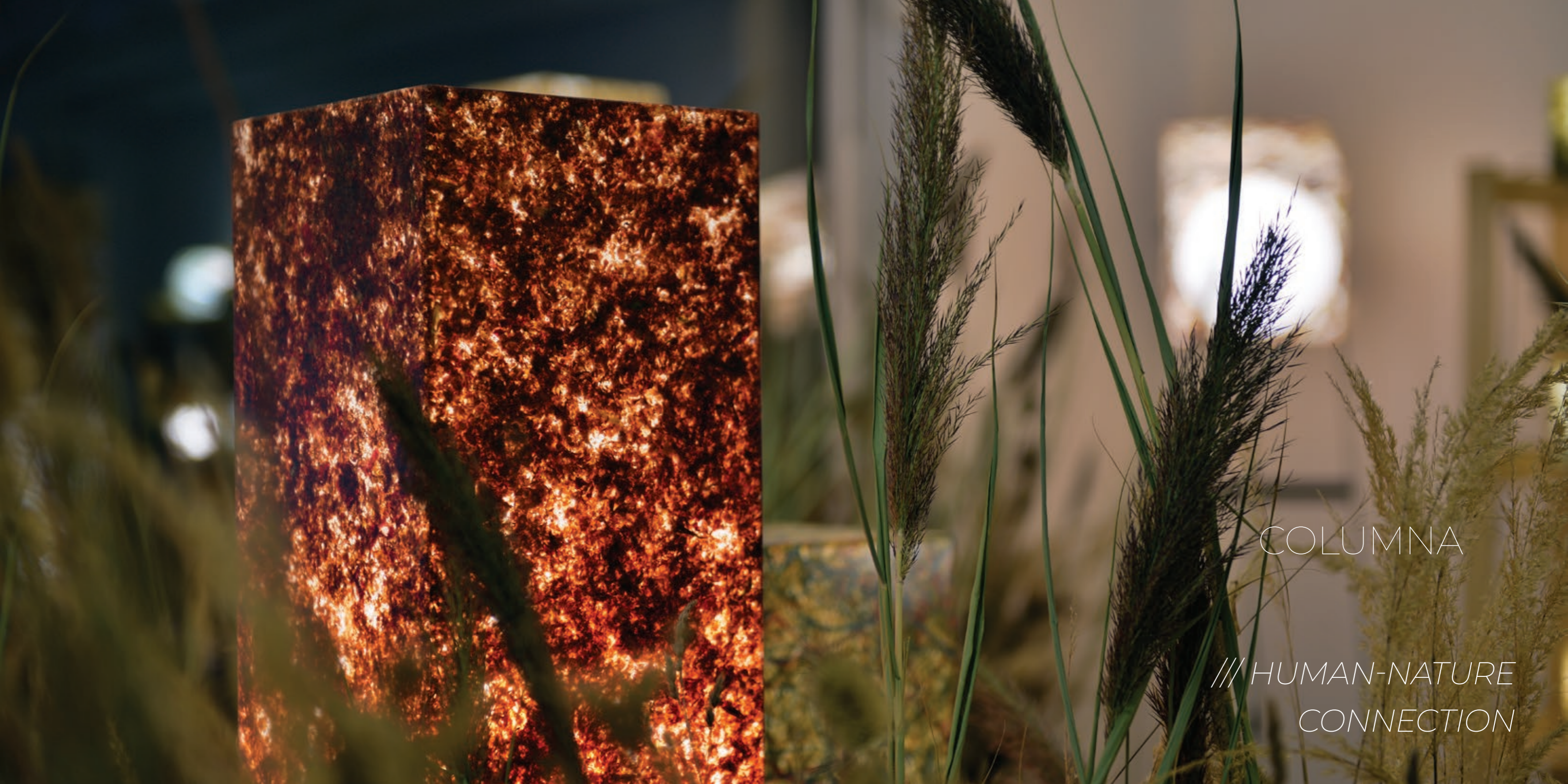
WIDTH: 30 cm

DEPTH: 30 cm





*/// NATURE-INSPIRED
INTERIORS*



COLUMNA

/// HUMAN-NATURE
CONNECTION



COLUMNNA ,XL'

FLOOR LAMPS

CODE

1206

WEIGHT

NET 5,2 kg

GROSS 5,7 kg

LIGHT SOURCE

E27 LED light

DIMENSIONS

BASE

HEIGHT: 20 cm

WIDTH: 20 cm

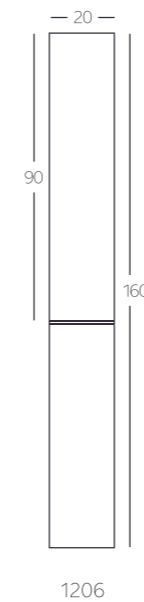
DEPTH: 70 cm

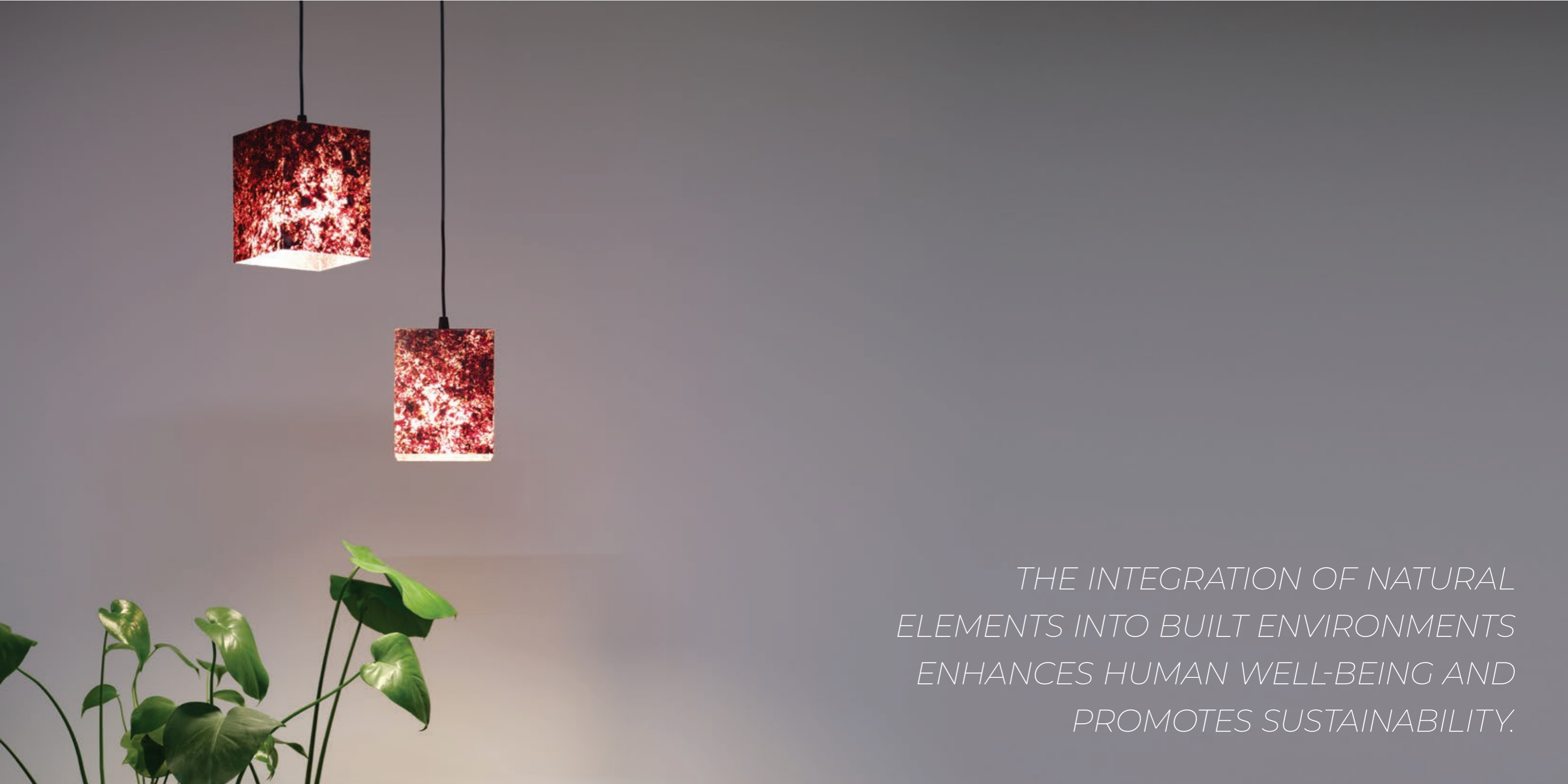
SHADE

HEIGHT: 20 cm

WIDTH: 20 cm

DEPTH: 90 cm

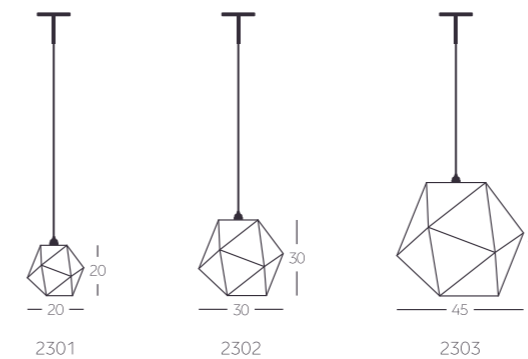
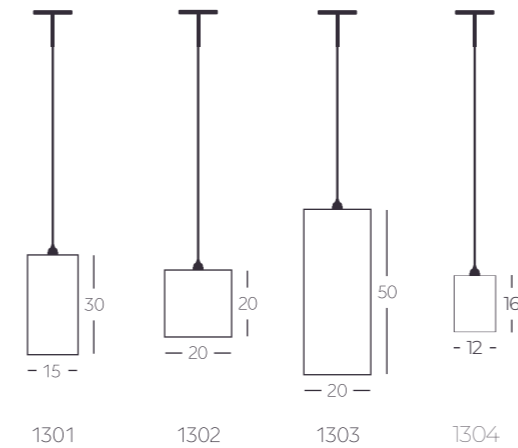




*THE INTEGRATION OF NATURAL
ELEMENTS INTO BUILT ENVIRONMENTS
ENHANCES HUMAN WELL-BEING AND
PROMOTES SUSTAINABILITY.*



CHANDELIERS



CODE

1301, 1302, 1303, 1304

LIGHT SOURCE

E27 LED light

DIMENSIONS

CABLE LENGTH:
Personalization options available.

TYPE: 1301
WIDTH: 15 cm
HEIGHT: 30 cm
DEPTH: 15 cm

TYPE: 1302
WIDTH: 20 cm
HEIGHT: 20 cm
DEPTH: 20 cm

TYPE: 1303
WIDTH: 20 cm
HEIGHT: 50 cm
DEPTH: 20 cm

TYPE: 1304
WIDTH: 12 cm
HEIGHT: 16 cm
DEPTH: 12 cm





/// HEALING
ENVIRONMENTS



PLANTS AND TEXTURES

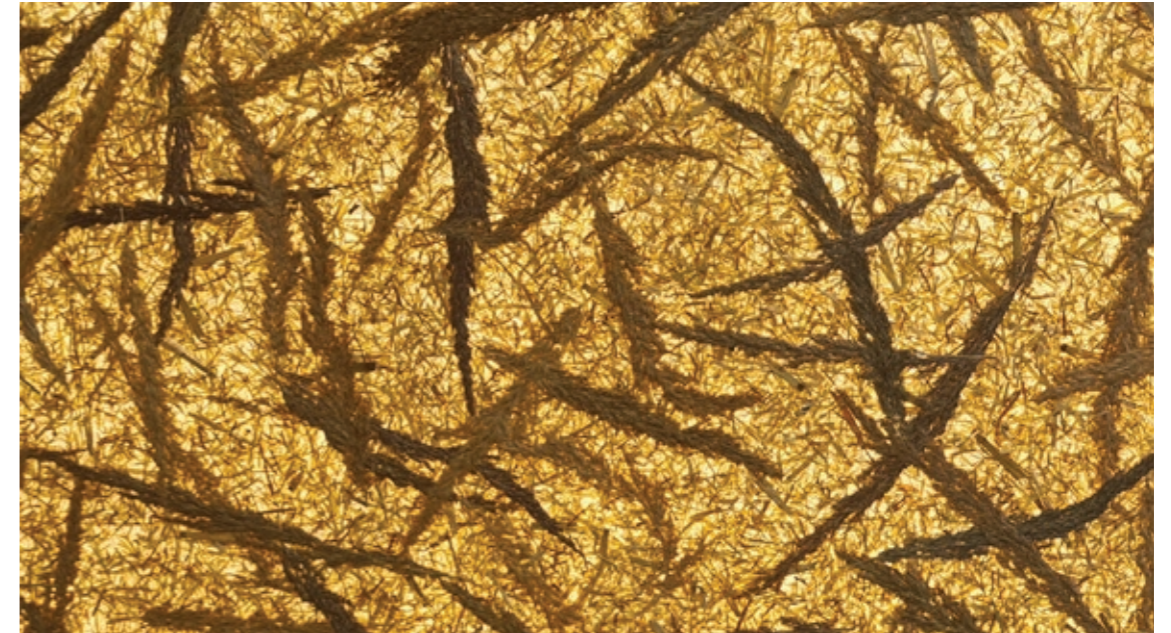
The obvious character of Viaplant is the plant itself – its details, colour and texture record one moment in time of the plant's development, whether it is a leaf, flower petal or plant stem.

Similarly, to amber that captures the history of life, Viaplant material encapsulates nature's artistic performance and preserves it in the long run. The colours from seasonal variations, the real plant textures and the originating location, all add an emotional dimension to the Viaplant material.



"The quiet beauty of the feather grass meadow, shrouded in mist, radiates a delicate harmony. Amidst the golden stems of the dry inflorescences, the distant forest edge emerges mysteriously, providing a picturesque backdrop to the scene. The composition is both abstract and natural, reminiscent of the 'pliage' motifs in Simon Hantai's paintings. The captivating pattern is perfectly expressed even on the small surface of a lamp, capturing the serene atmosphere of the summer meadow."

CALAM-TRITICUM | bushgrass-straw





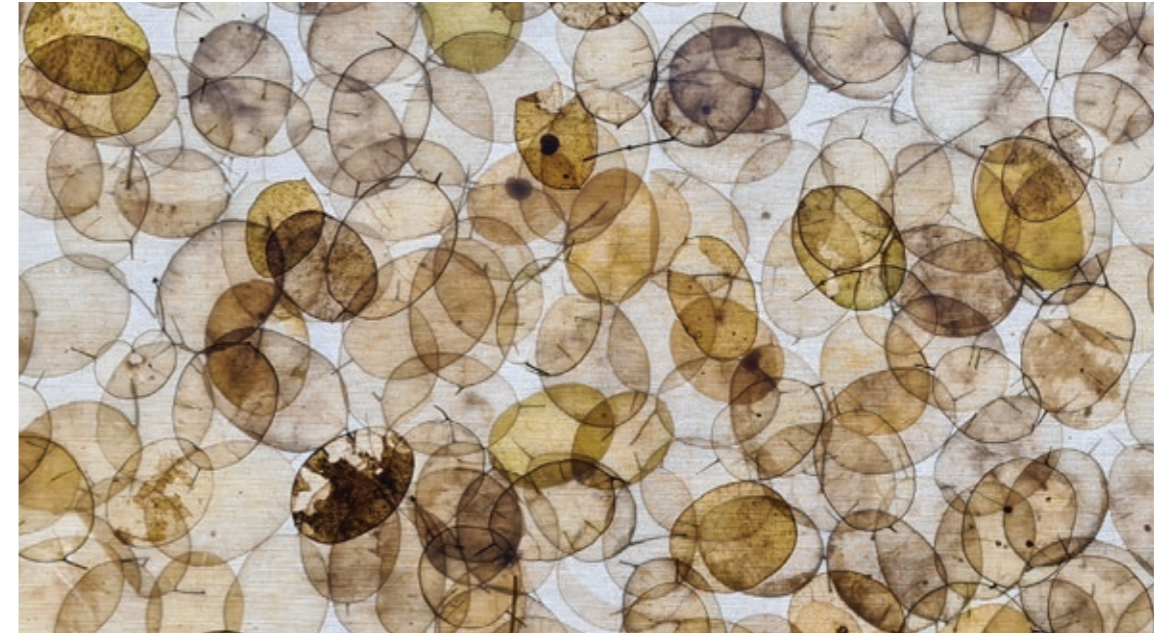
PHRAGMIT | reed





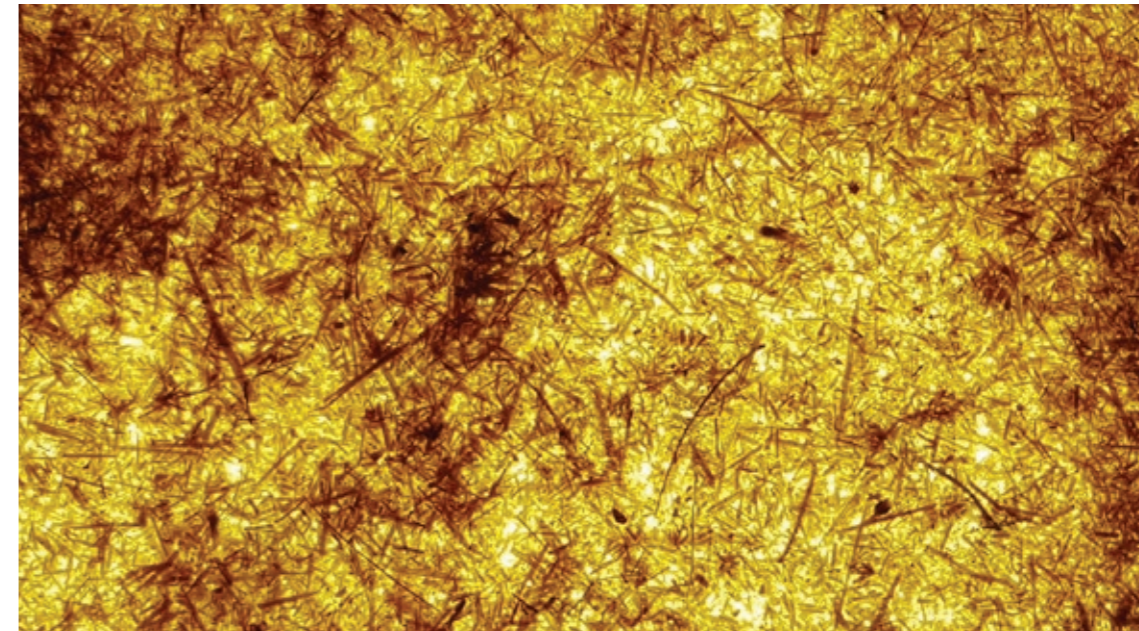
"The delicate beauty of the honesty plant's translucent seed pods exudes a fragile elegance. The dry, silvery husks hang gracefully from the slender stem, resembling tiny works of art. This natural composition evokes both abstract artistic creations and fine craftsmanship.

LUNARIA | annua honesty



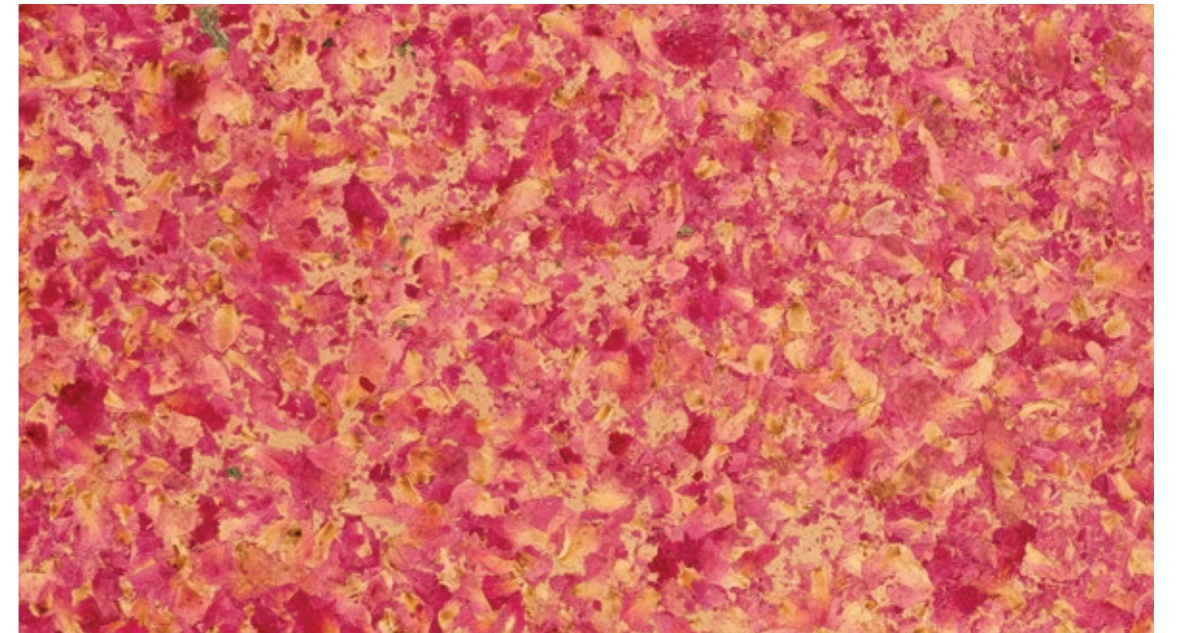
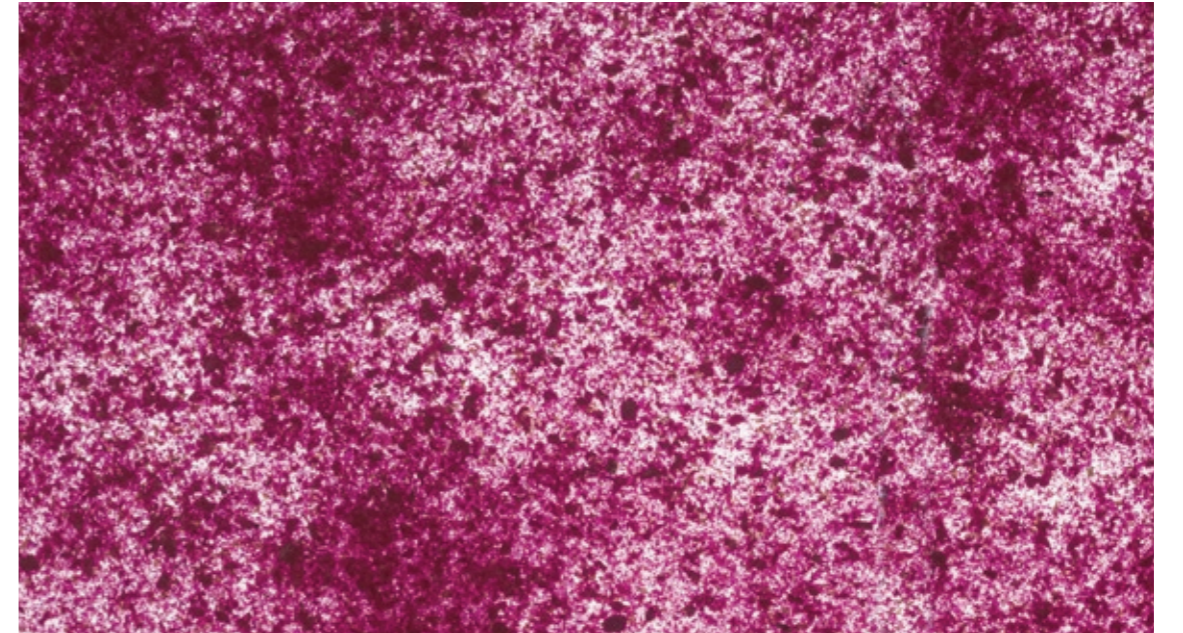


TRITICUM | straw



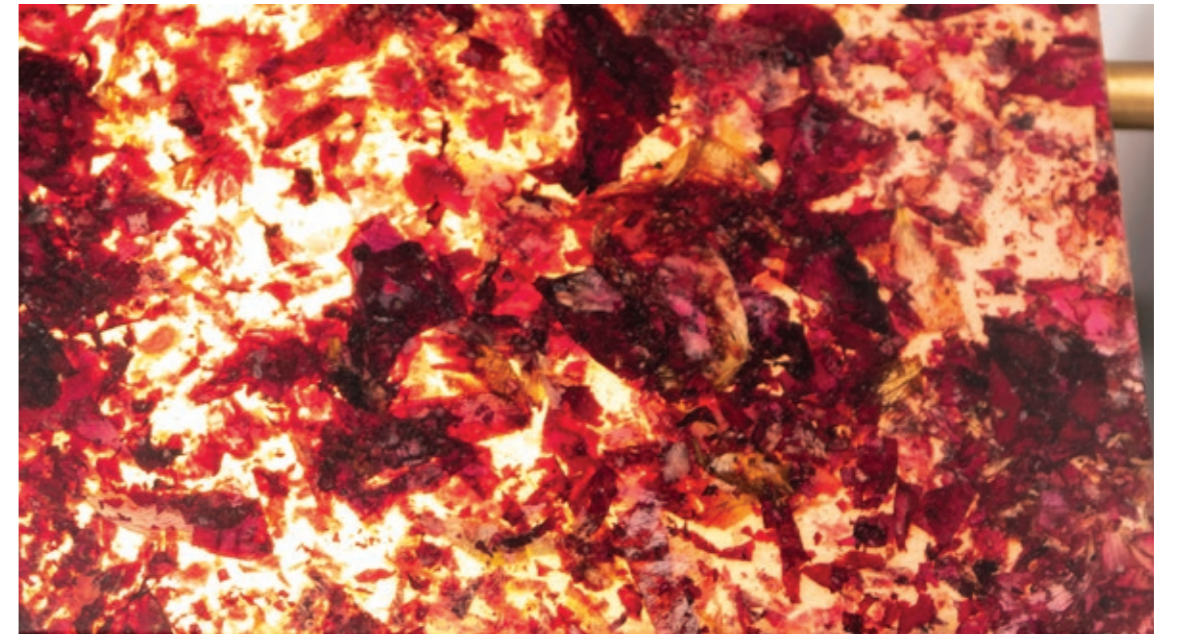


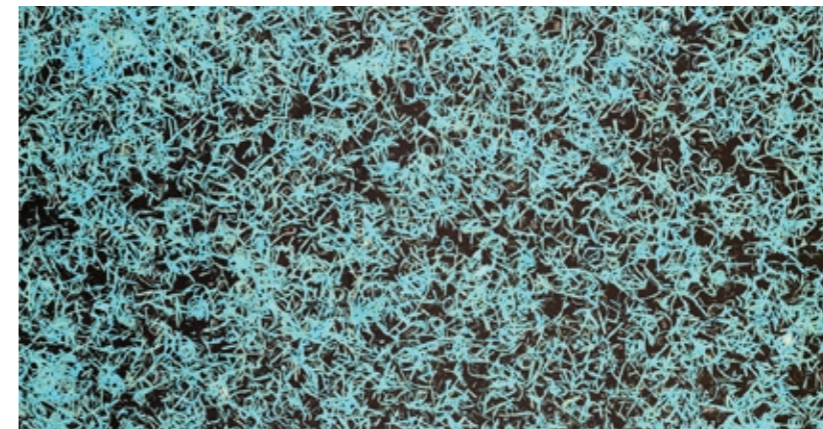
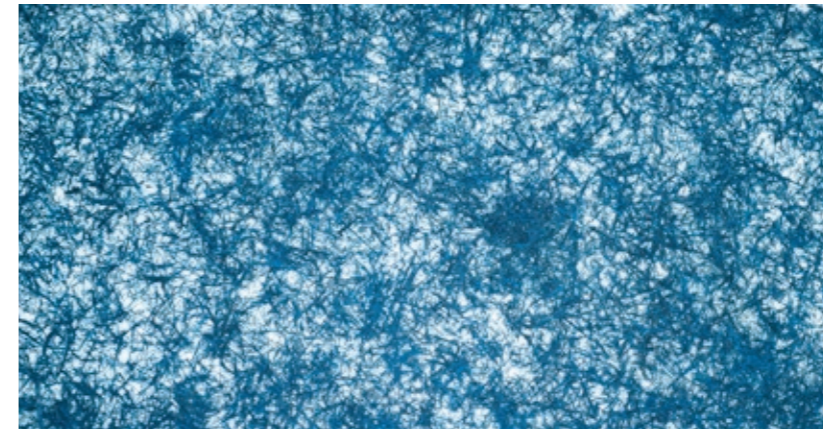
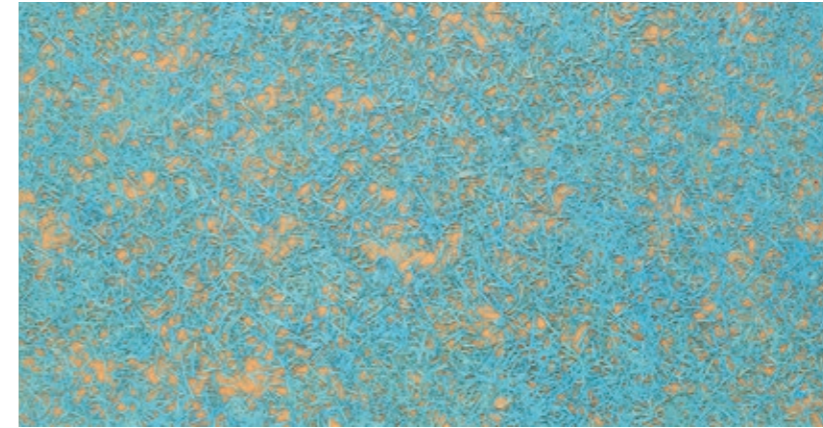
PEONIA | peony





ROSA| roze





Lignum color combines wood-wool with human imagination. The texture of the tinted wood wool creates a modern effect, and when illuminated, it gives an impressive atmosphere.

Lignum blue / Tinted Woodwool

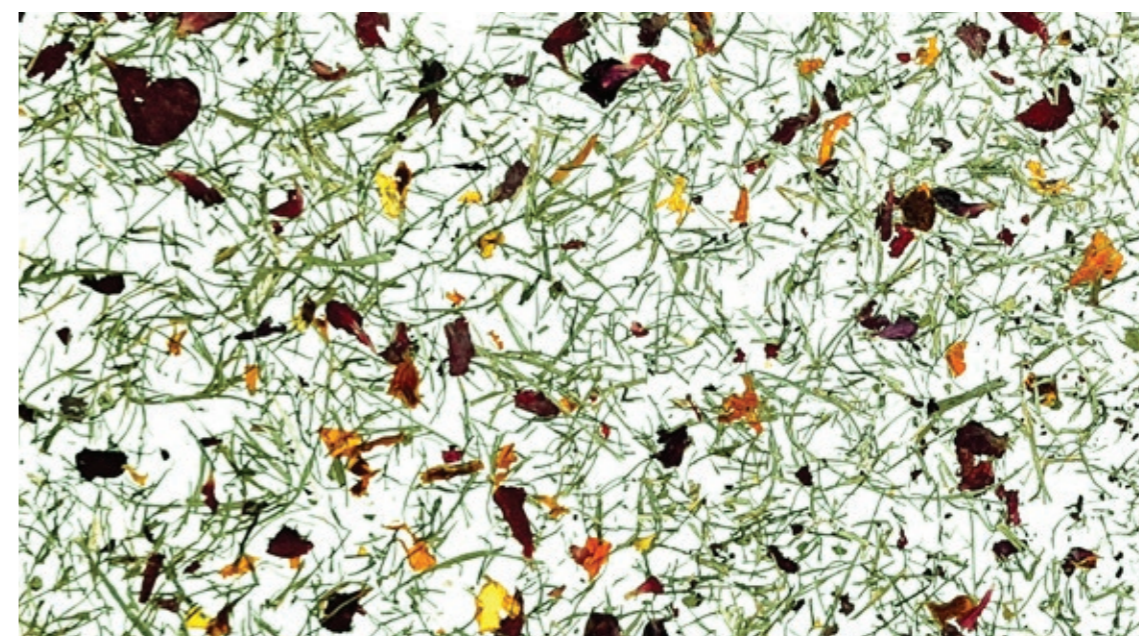


GRAMINA | hay





POA FLORI | grass with flowers





Flores mix / mixed petals



Flores mix / mixed petals

Bespoke textures Storytelling concept

***A good object is defined by
your understanding of what
it means to you.***

The Viaplant brand is fundamentally defined by its philosophy, the so-called story concept. The duality of form and function is complemented by a story that stems from the place of origin of the plants and the associated memories.



VIAPLANT IMAGINES A FUTURE WHERE PEOPLE LIVE IN MORE NATURAL SPACES AND RELATE TO NATURAL RESOURCES IN A MORE CONSCIOUS MANNER

Reconnecting with nature

Today, we have to look at an urban green space - like any other utilities - as a service provider. We must interpret it as a system that provides people an ecological service. Urban green areas are the basis of healthy urban life. They are habitats, community spaces, means of fresh air and serves as climate protection.

As landscape architects and material developers, our mission is to make people have a more conscious, living relationship with natural resources in our modern built environment. Our workshops, presentations and tenders aim to improve the problem of so-called 'plant blindness', which is a pervasive insensitivity to the green environment and a general neglect of the plants. Furthermore, following our philosophy, we like to draw attention not only to the urban importance of plants, but also to their cultural significance.

Sustainability

Examining our relationship with the Earth, we see that we depend directly and indirectly on the raw materials mined, grown or manufactured in it. For this reason, we must pay close attention to the environmental impact of our materials and the sustainability of production technologies.

We are constantly working on finding solutions that are as environmentally conscious as possible. We try to develop organic materials that have a positive effect on the world by large, being less polluting and using the sustainable processes of nature with their recyclable or even compostable properties.

We are present in material libraries to display and share authentic information regarding our research and material innovations, thus we are able to create cooperation in between the design industry and other sectors, as well as designers and manufacturers.



V I A P L A N T

+36 (20) 257 7040
viaplant@viaplant.com
www.viaplant.com

SHOWROOM
H-1136 Budapest,
Hegedűs Gyula utca 15.