




VIAPLANT

designed by nature

KITCHEN
SPLASHBACKS



Nature. Story. Material.

Plant based creative materials for architecture and design

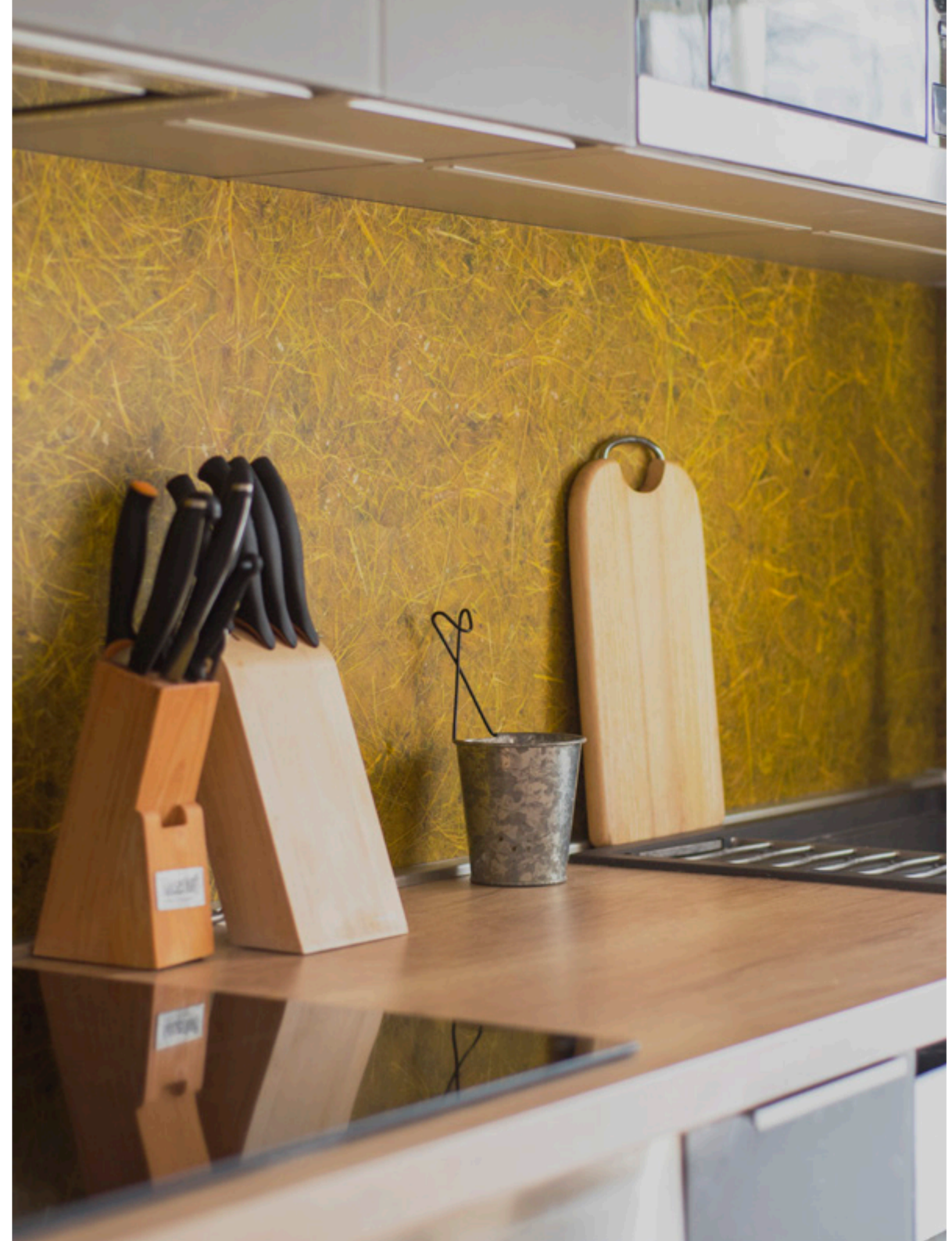
Leptek-Terv Landscape Architecture Studio has been engaged in Landscape Architecture since 2002. Our work focuses on people-centred renewal of urban spaces, parks, and residential areas, as well as institutional gardens, playgrounds and the regeneration of historic gardens. From the beginning we believe that a Landscape Architect is both an engineer, an artist and a community organizer. For this reason, our work is not limited to design, but also to create values in other social activities related to Landscape Architecture, such as community planning, applied arts, publications and education.

We are fascinated by the beauty and diversity of nature. Thanks to our research and development activities, we have created plant-based creative composites that create a relationship between landscape and architecture, creating an artistic and inspiring surface for man.

Viaplant aims to bring closer nature's beauty and diversity and create unique values in living spaces by the stories the plants can tell.

Kitchen splashbacks

The use of Viaplant panels on kitchen back walls is given special emphasis. The decorative cover is washable and a high degree of scratch resistance can be achieved with a suitable surface treatment. It can also be applied to entire wall surfaces in a continuous or different tiled arrangement.







Materials & textures

An obvious feature of Viaplant is the plant itself. Like amber that captures the history of life Viaplant encapsulates nature's artistic performance. It preserves the details, colors and texture of the plants, creating a unique and inimitable pattern for each and every piece.

In the **RESIN** composite, the plants are paired with a resistant, water-clear binder, providing durable, scratch-resistant and easy-to-clean surfaces.

Viaplant **GLASS** encapsulates the various parts in glass. its shiny surface gives it elegance and due to its higher resistance, it adequately protects enclosed plants even in places with more physical stress.



Viaplant® RESIN

Sizes: panel: 2100x1100 mm or 2500x1250 mm

Sizing: customizable, possible to be cut into curved shapes

Use: finishes, decoration, products

Applications: wall tiles, partition walls, kitchen splashbacks, furniture finishing

Characteristics: lightweight, durable surface, matte or glossy



12+ types of plant textures

custom solutions are available

Poa/grass

Rosa/rose

Peonia/peony

Eleagna/silverberry

Calam-triticum/bushgrass-straw

Solidago/goldenrod

Phragmit/reed

Lignum colour/coloured woodwool

Triticum/straw

Foli flavi/yellow leaves

Foli brun/brown leaves

Calam-poa/bushgrass-grass

Viaplant® GLASS

Maximum size: 3000x1500 mm

Sizing: custom size according to the customer's pre-defined requirements (tempered glass cannot be customized afterwards)

Use: finishes, decoration

Application: wall coverings, rails, balustrades, shower cabins, bath shower screens, design radiator front panel, furniture, windows and door glass surface

Characteristics: glossy glass surface, vivid colors, due to glass it adds certain depth to the material. Non fading, UV resistant



12 types of plant textures

Poa/grass

Rosa/rose

Peonia/peony

Lilium/daylilies

Foli brun/brown leaves

Eleagna/silverberry

Lignum colour, blue/coloured woodwool

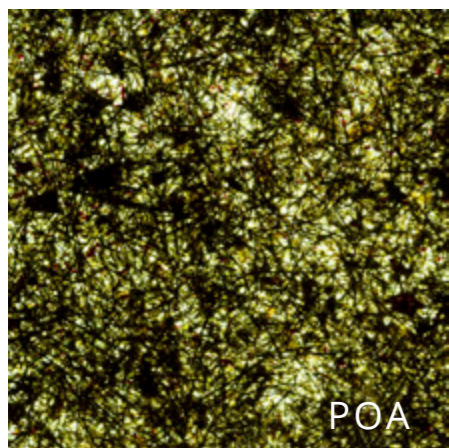
Lignum colour, yellow/coloured woodwool

Phragmit/reed

Triticum/straw

Solidago/goldenrod

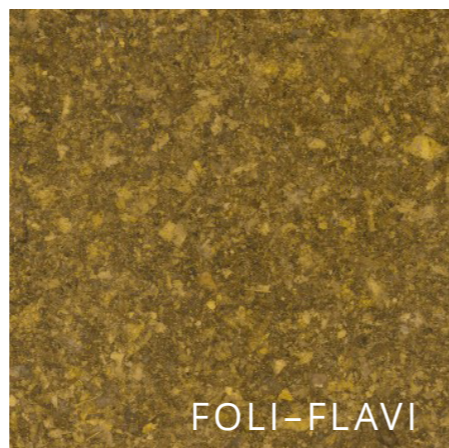
Calam-poa/bushgrass-grass



POA



FLORES



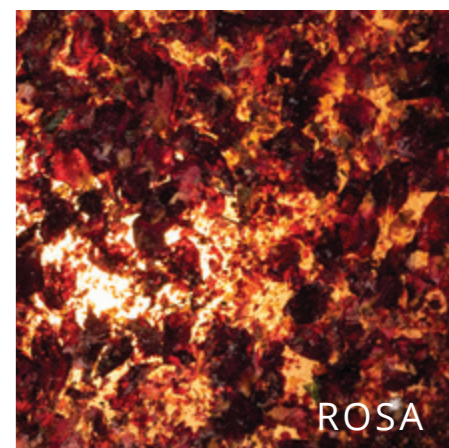
FOLI-FLAVI



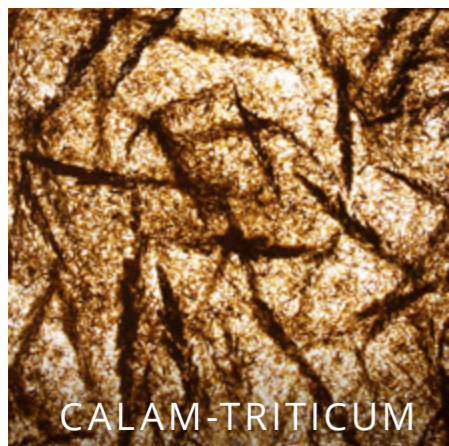
FLORES



GRAMINA



ROSA



CALAM-TRITICUM



CUVÉE



ELEAGNA



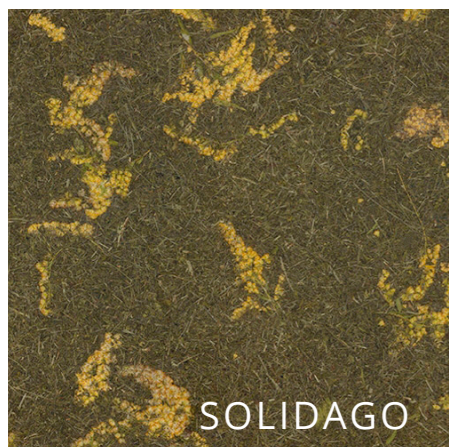
PEONIA



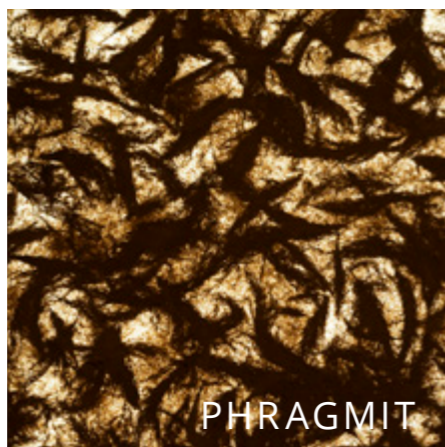
CALAM-POA



PHRAGMIT



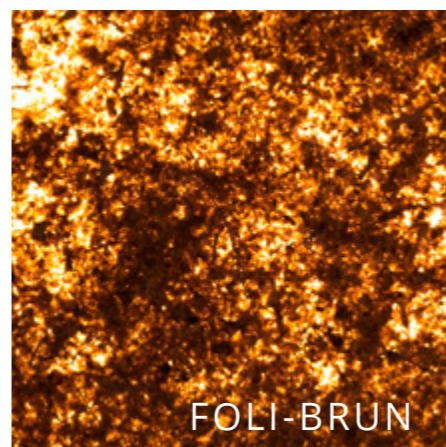
SOLIDAGO



PHRAGMIT



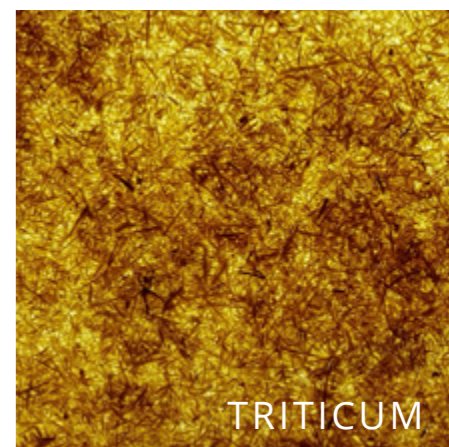
POA-FLORI



FOLI-BRUN



CALAM-TRITICUM



TRITICUM

Installation guide

- Sika Cleaner P cleaning fluid
- Sika Fixing Tape 12x2 mm
- Silicone adhesive: Sikasil C
- Prepared dosing nozzle with triangular cut-out
- Masking tape: arbitrary
- Flexible joint sealant: Sikasil C transparent/same colour
- Smoothing fluid: Sika Tooling agent

PREPARING THE SURFACE

Place the Viaplant panel sheets to their place to check the dimensions.

Dust the backside surface where gluing, then clean it with the Cleaner P cleaning liquid according to the instructions, if necessary, prime it according to the application instructions of the adhesive.

For subsequent grouting, use masking tape on the color side of the boards, along the edges. It is advisable to apply the masking tape on a horizontal surface before gluing

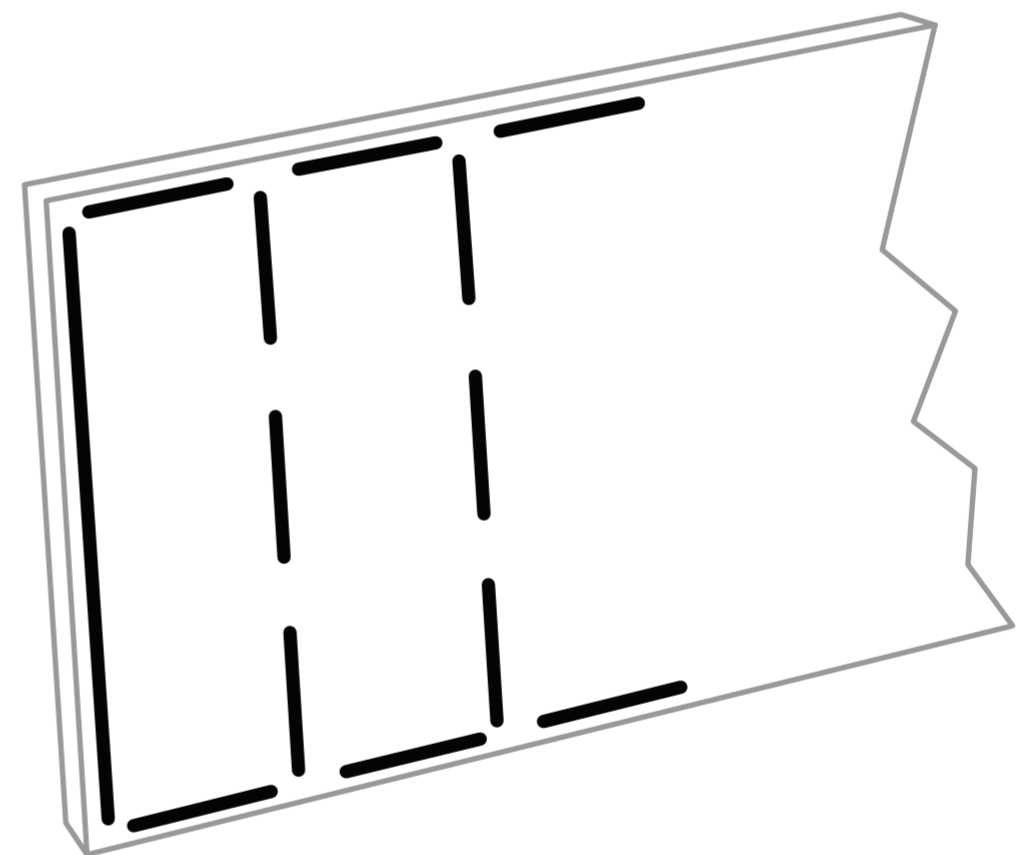
1.

APPLYING DOUBLE-SIDED TAPE

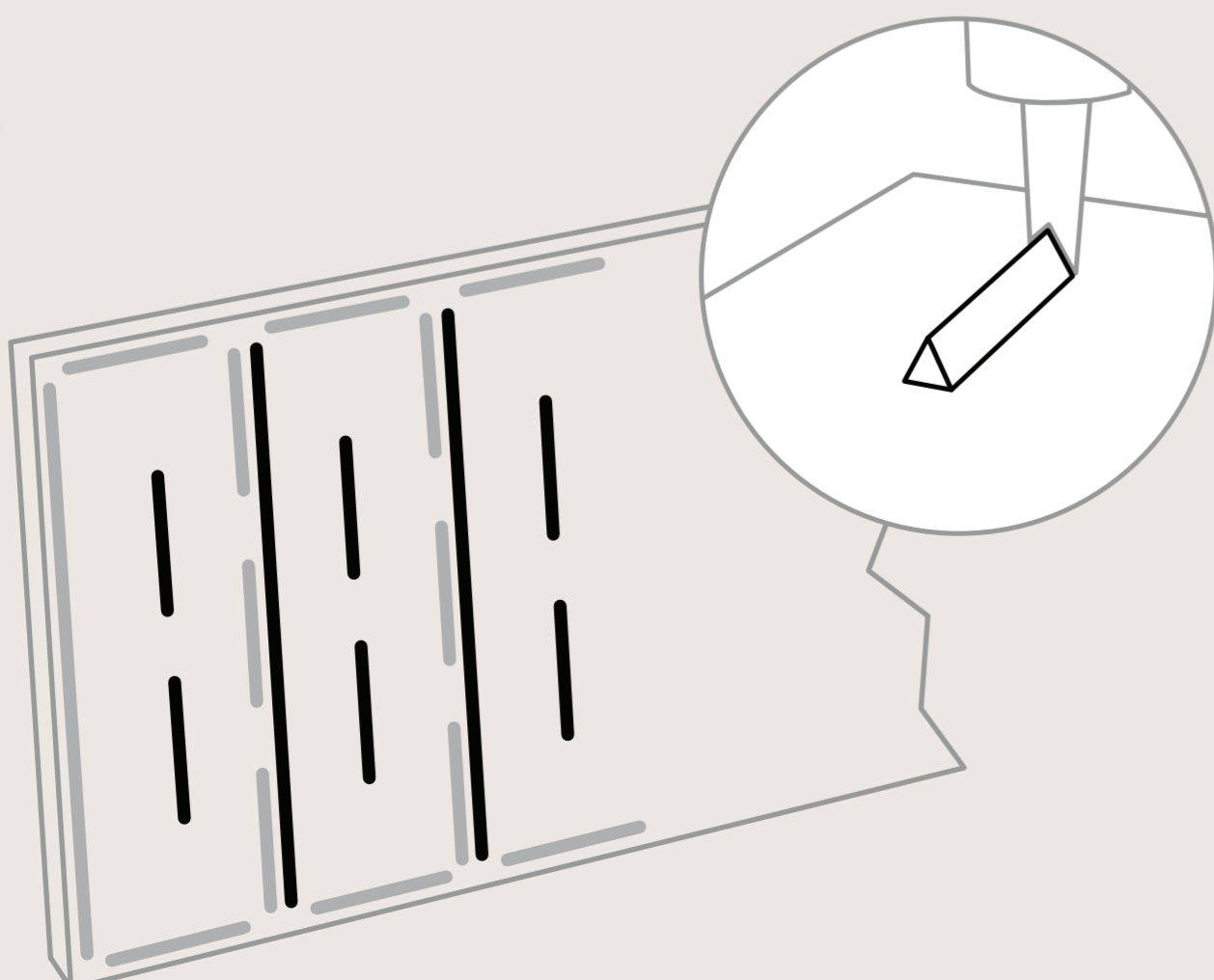
After complete drying, apply the double-sided adhesive tape along the edges as well as transversely, according to the figure.



Between the crosswise adhesive tapes, keep approx 15 cm distance (max. 20 cm distance allowed!) The adhesive tapes can be applied in stages, but between stages keep a distance of max.10 cm! Along the joint of two sheets, the adhesive tapes must be continuous!



2.



APPLYING FLEXIBLE ADHESIVE

With the properly prepared nozzle (~10 mm high triangular end profile) apply the adhesive strips evenly to the places shown in the figure.



Pull the adhesive strips next to the double-sided tapes, about 15 mm apart and before installing the wall panel, remove the protective film from the double-sided tape.

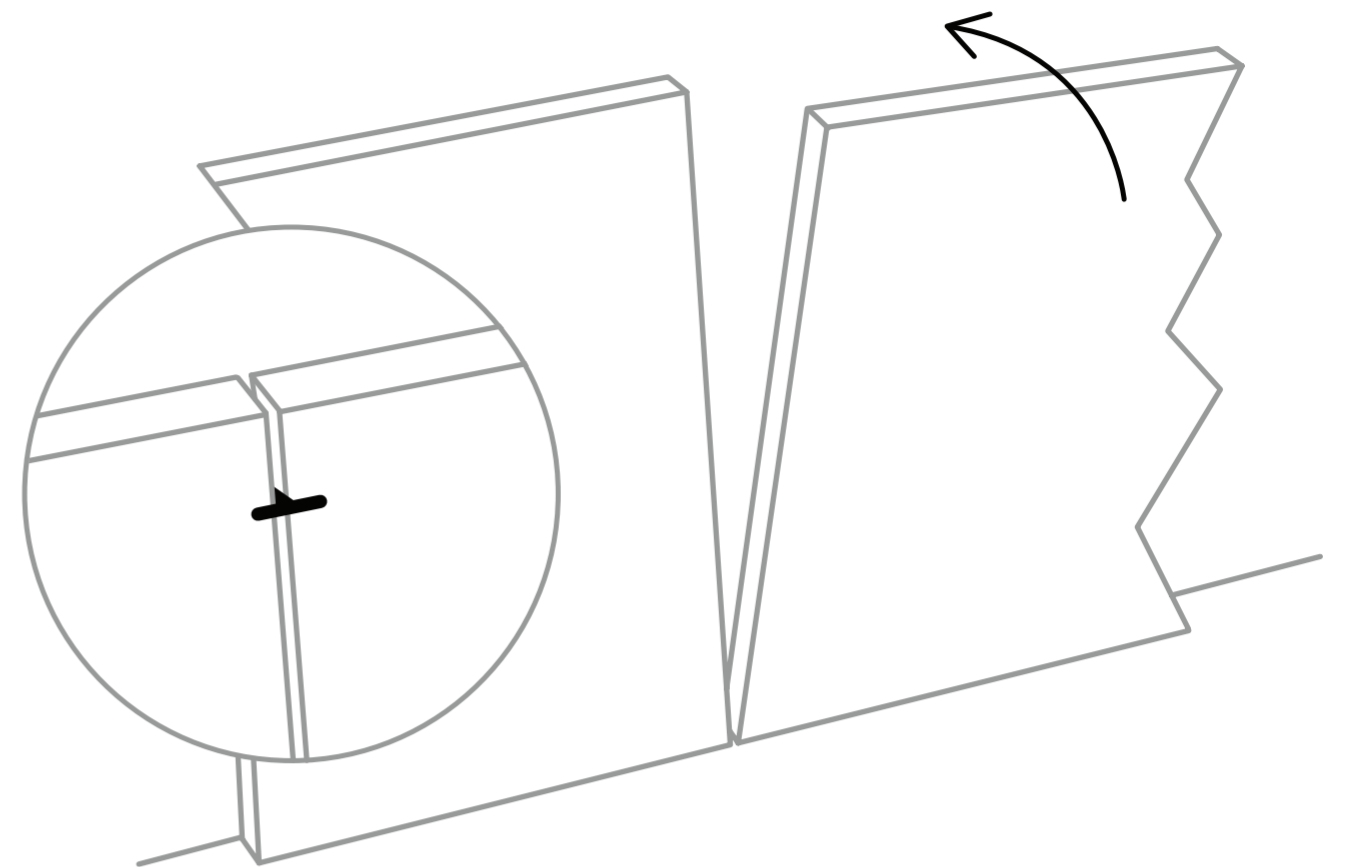
3.

PUTTING UP AND FITTING THE PANELS

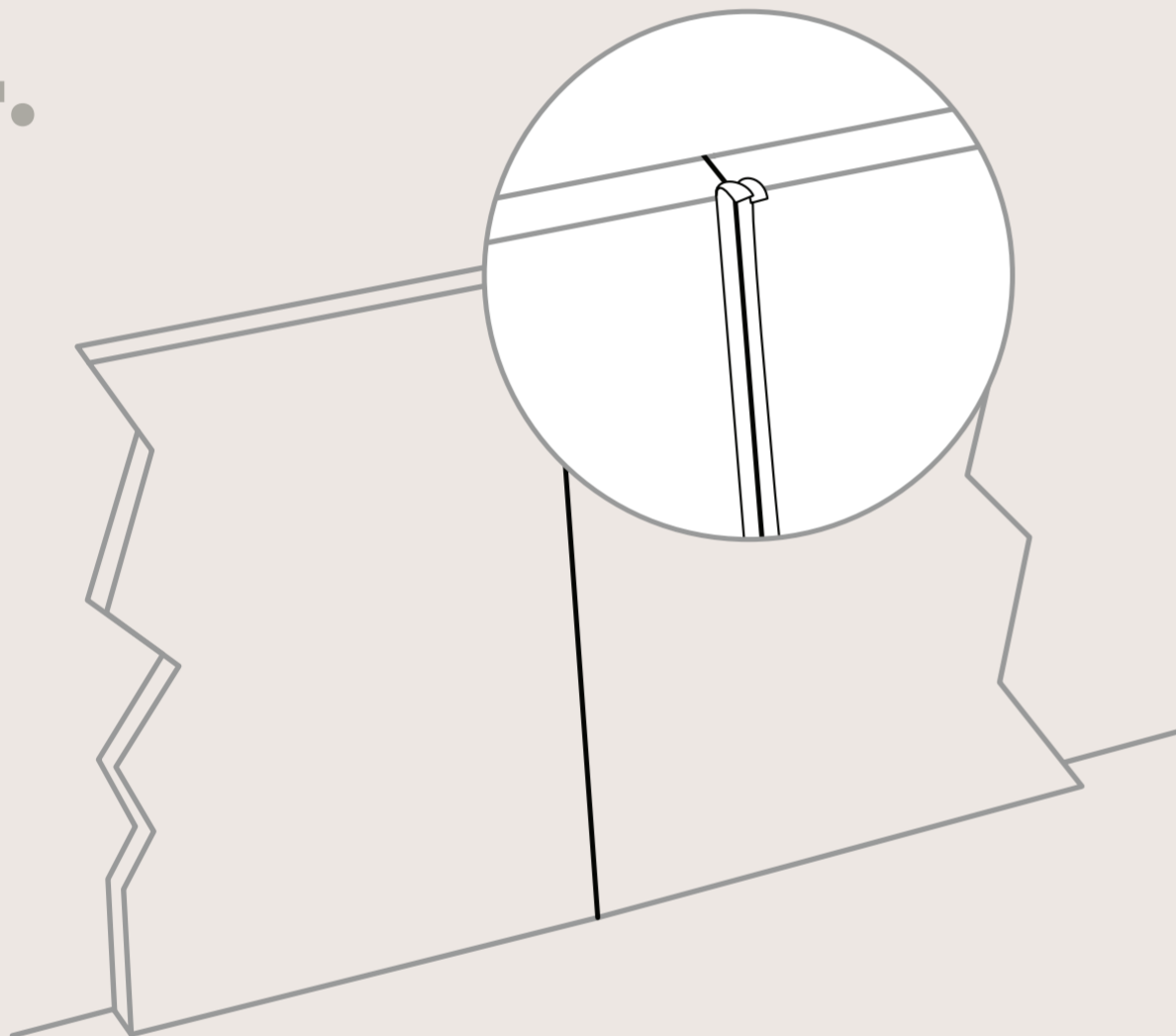
Place the panels on the wall, taking care to fit them precisely, as the tape cannot be repositioned.



Press the sheets as evenly as possible against the wall with a flat tool (e.g. trowel, spirit level, etc.) until the tapes fix it in the right place. In order to set the exact joint gaps, always use a joint cross or any other spacer.



4.



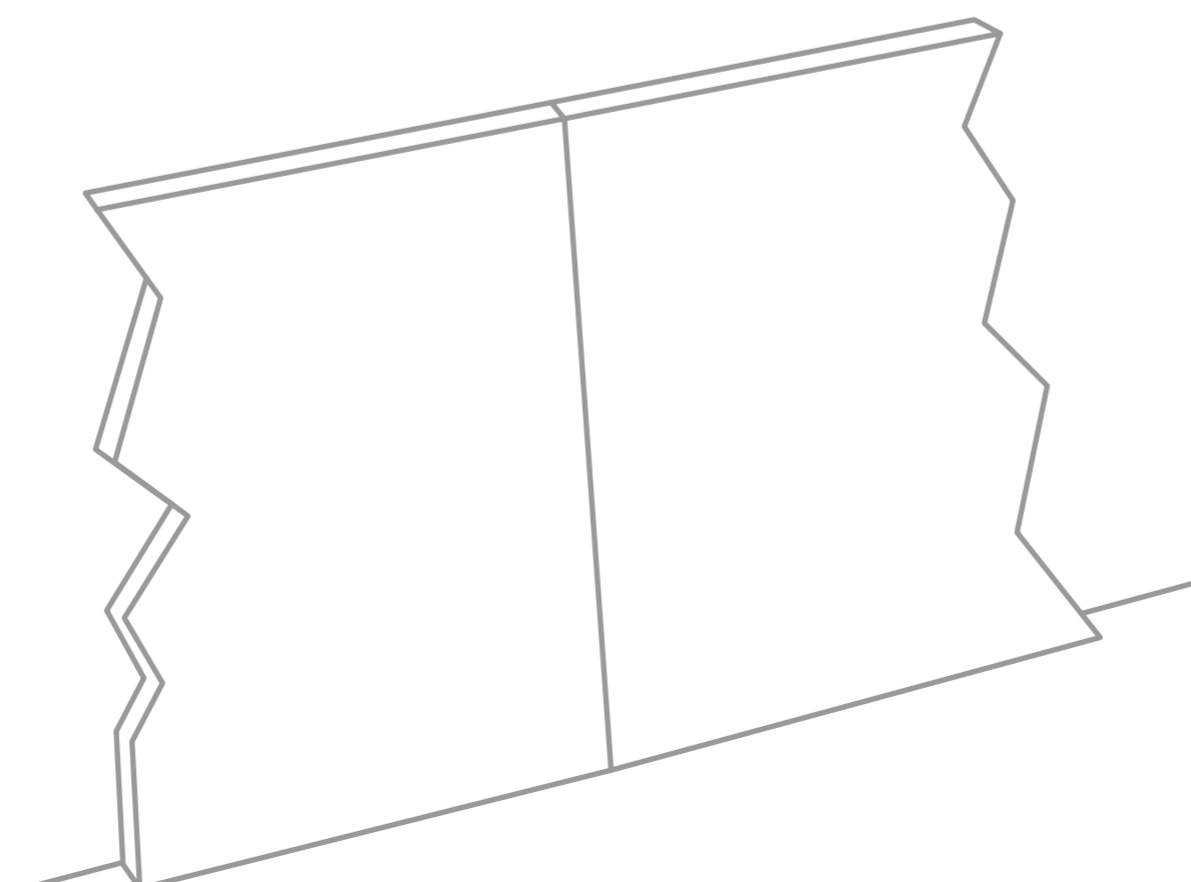
GROUTING

Seal the joints with flexible joint sealant. This is ideal 1-3 days after the bonding.



When grouting, use masking tape along the edges to ensure an even and spot-free joint. It is advisable to apply the masking tape on a horizontal surface before gluing. It is recommended to use a special smoothing fluid to smooth the seal. Remove the masking tapes before the sealant starts to dry.

After complete drying, the surface can be used.



VIA PLANT

+36 (20) 257 7040
viaplant@viaplant.com
www.viaplant.com

SHOWROOM
H-1136 Budapest,
Hegedűs Gyula utca 15.



VIAPLANT.COM